

TO: The Chairperson and Members of the
Business and Facilities Standing Committee

FROM: Superintendent of Business and Facility Services

SUBJECT: **ATTENDANCE AREA REVIEW 2018:01: TOWN OF BRADFORD WEST
Gwillimbury Elementary Schools**

1. Background

The Board of Trustees approved an Attendance Area Review (AAR) for elementary schools in the Bradford area as set out in Report No. BF-D-2, Capital Plan 2018-2019, dated March 7, 2018. Schools included in the review were Chris Hadfield Public School, Fieldcrest Elementary School, Fred C. Cook Elementary School, Honourable Earl Rowe Public School, Sir William Osler Public School and W.H. Day Elementary School.

Following the guidelines of Policy 2317 – School Attendance Area and Policy 4116 – French as a Second Language: French Immersion, the review was undertaken to create attendance areas for two new elementary schools, the North Bradford public school and the South Bradford public school, with consideration of the expansion and location of the French Immersion as a Second Language program. The new North Bradford public school (501 pupil places) received Ministry of Education (MOE) funding approval in January 2018, while the new South Bradford public school (593 pupil places) received MOE funding approval in March 2020. Both schools are under construction with target opening dates of fall 2022.

When considering new attendance areas and changes to existing attendance areas, the intent is to balance school enrolments, create sustainable, stable school populations and school programs, efficiently use accommodation, and realize transportation efficiencies while also preparing for future growth.

Residential growth within Bradford has resulted in a 27 percent increase in elementary enrolment. The community of Bradford West Gwillimbury is considered a growth community under the Growth Plan. The province has allocated additional growth of approximately 7,530 people to the Town of Bradford West Gwillimbury by 2031. This equals an increase in approximately 4,680 residential units over the next 10 years. On average, 468 building permits per year are required. The noted growth provided justification for two new elementary schools in the community of Bradford. A new secondary school will also be required and was included in the 2021 Capital Priorities submission to the MOE.

The current attendance areas are outlined in APPENDIX C. October 31, 2020, enrolment at Chris Hadfield Public School was 893 students with the school having a capacity of 507. School utilization was at 176 percent with 18 portables on site. Enrolment at Fieldcrest Public School was 917 students with the school having a capacity of 516. School utilization was at 178 percent with 18 portables on site. Fred C. Cook Elementary School's enrolment was 499 students with the school having a capacity of 412. School utilization was at 121 percent with five portables on site. Honourable Earl Rowe Public School's enrolment was 201 students with the school having a capacity of 219. School utilization was at 92 percent with no portables on site. Sir William Osler Public School's enrolment was 129 students with the school having a capacity of 173. School utilization was at 75 percent with no portables on site. W.H. Day Elementary School's enrolment was 793 students with the school having a capacity of 559. School utilization was at 142 percent with 11 portables on site.

Presently, there are 325 students in the French Immersion program located at W.H. Day Elementary School. W.H. Day Elementary School is the designated school for the French Immersion program and currently serves the entirety of the Town of Bradford West Gwillimbury and the public elementary schools located within the municipality. Current trends indicate that the French Immersion program does have additional unmet demand based on current and previous year waitlists. There is sufficient interest to create an additional French Immersion program at another location with an additional intake of two Grade 1 classes per year.

The following provides a summary of current enrolment and utilization:

2020					
Elementary School	OTG 20	Portables 2020	Program	Students	Utilization
Chris Hadfield PS	507	18		893	176%
Fieldcrest ES	516	18		917	178%
Fred C. Cook PS	412	5		499	121%
Hon. Earl Rowe PS	219	0		201	92%
Sir William Osler PS	173	0		129	75%
W.H. Day ES	559	11	JK-8 RT	468	84%
			1-8 FI	325	58%
			Sum	793	142%
Total	2386	52		3432	144%

Note:

OTG - On The Ground Capacity

JK-8 RT - Junior Kindergarten to Grade 8 Regular Track

1-8 FI - Grade 1 to Grade 8 French Immersion

2. Current Status

The AAR was approved to commence in 2018. Board staff hosted a community information meeting at Bradford District High School in February 2019, to outline the process and collect feedback. School councils were provided updates, and regular updates on the status of projects and approval were provided to principals of each Bradford elementary school in order to keep the community apprised.

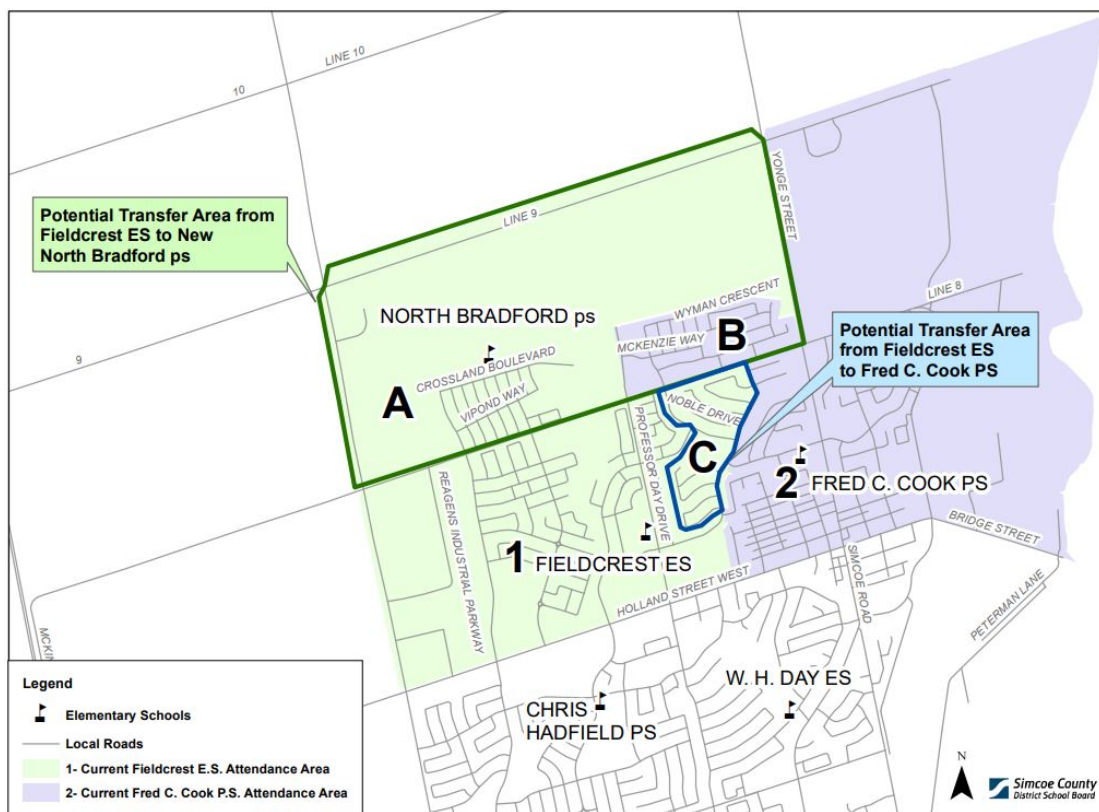
Due to the public health guidelines resulting from the COVID-19 pandemic, the board's usual practice of holding large in-person public meetings was not possible. As a result, the board utilized ThoughtExchange®, an online communication and consultation tool, to share information on the proposed new boundaries and collect feedback and comments related to the attendance area review.

Presentations and videos were provided, explaining the process, timing and status of construction and proposed new attendance boundaries. Participation in ThoughtExchange® was initially open from May 25 to June 8, 2021. Based on feedback requesting further time for input, the ThoughtExchange® was extended to June 28, 2021.

A summary of the proposed attendance area changes is outlined on page 3. The full presentations and frequently asked questions documents that were provided via the ThoughtExchange®, are attached as APPENDIX A.

New North Bradford public school proposed recommendations

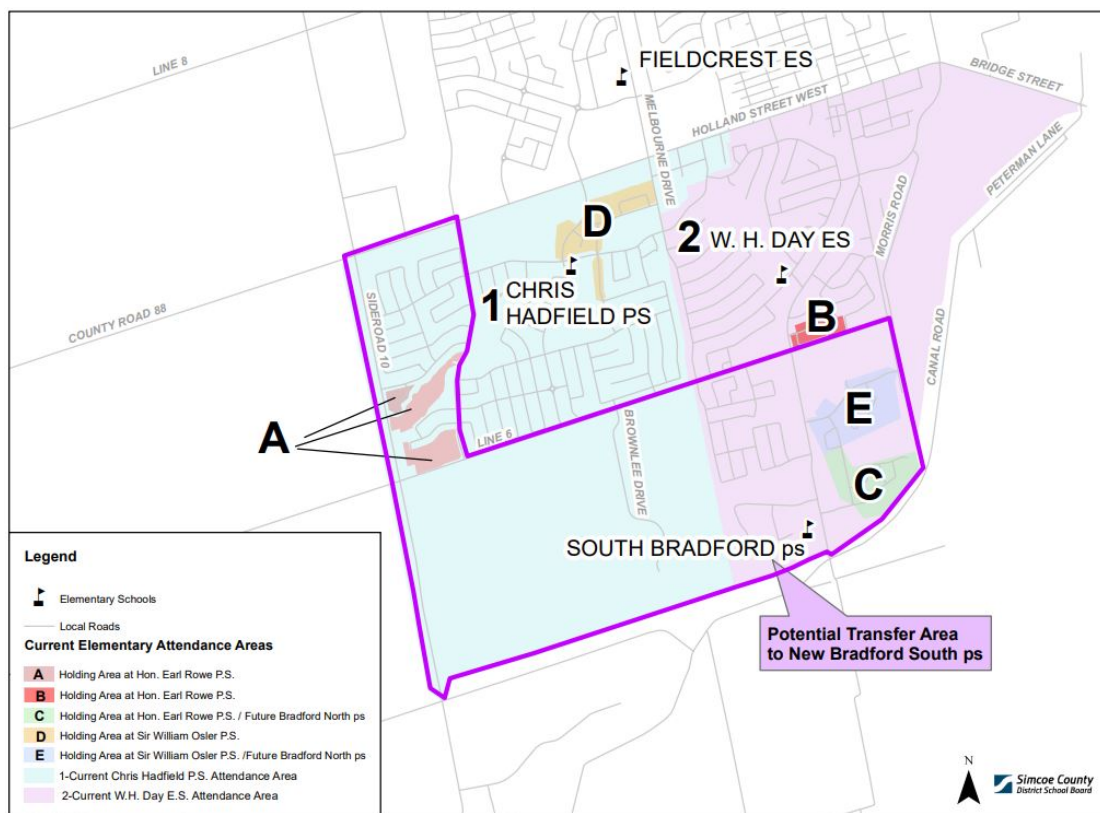
As illustrated on the following map, three areas were considered for transfer as part of the AAR. Area A is proposing a transfer from Fieldcrest Elementary School to the new North Bradford public school. Area B is proposing a transfer from Fred C. Cook Elementary School to the new North Bradford public school. Area C is a proposed transfer from Fieldcrest Elementary School to Fred C. Cook Public School.



New South Bradford public school proposed recommendations

The proposed attendance area for the new Bradford south public school is illustrated on page 4. Areas currently attending Chris Hadfield Public School are shown in blue, while the area shown in purple are students currently attending W.H. Day Elementary School. Other areas identified are as follows:

- (i) Area A and C students currently holding at Honourable Earl Rowe Public School would be transferred to the new South Bradford public school;
- (ii) Area B students currently holding at Honourable Earl Rowe Public School would be transferred to W.H. Day Elementary School;
- (iii) Area D students currently holding at Sir William Osler Public School would be transferred to Chris Hadfield Public School; and,
- (iv) Area E students currently holding at Sir William Osler Public School would be transferred to the new South Bradford public school.



French Immersion proposed recommendations

The AAR also recommended the creation of a second French Immersion program within the Bradford community. One program would be accommodated at the new North Bradford public school which would include the elementary feeders of Fieldcrest Elementary School, Fred C. Cook Public School, Honourable Earl Rowe Public School and the new North Bradford public school. The other program would remain accommodated at W.H. Day Elementary School which includes the elementary feeders of Chris Hadfield Public School, the new South Bradford public school, Sir William Osler Public School and W.H. Day Elementary School. The proposal would include the transfer of current French Immersion students attending W.H. Day Elementary School, who reside in the current Fieldcrest Elementary School, Honourable Earl Rowe Public School and Fred C. Cook Public School attendance areas.

3. Comments and Feedback

Opportunities for comments and feedback were available via written submissions and ThoughtExchange®. Staff received written correspondence via email from 13 unique community members. The following summarizes the topics and issues raised:

- (i) multiple Armstrong Crescent residents object to moving to the new south Bradford public school, as it is much further away from Chris Hadfield Public School and will now require bussing as opposed to being able to walk;
- (ii) concerns about the amount of time on the bus to the new South Bradford public school;
- (iii) no opportunity for options or choice of school;
- (iv) parents/guardians not close to school in case of emergency;

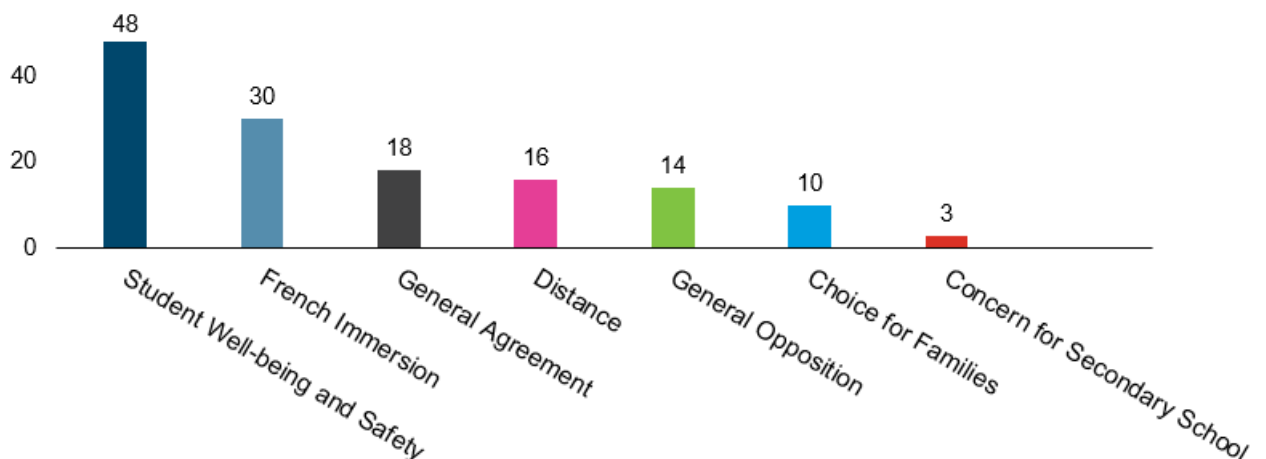
- (v) school not accessible by walking;
- (vi) rationale of creating walking schools defeated;
- (vii) discontent with consultation and decision process;
- (viii) unfair to residents who have lived there a long time;
- (ix) opposition to transfer of area C From Fieldcrest Elementary School to Fred C. Cook Public School;
- (x) keeping students living on Line 8 at Fred C. Cook Public School; and,
- (xi) satisfaction with the proposed attendance areas.

Substantially more feedback was obtained via ThoughtExchange® with the most common topics and issues outlined below. A detailed summary report is also provided in APPENDIX B.

New North Bradford public school

The new North Bradford public school ThoughtExchange® had approximately 177 participants with 141 thoughts being shared. Feedback was primarily received from Fieldcrest Elementary School, Fred C. Cook Public School and W.H. Day Elementary School (representing the French Immersion community). The following figure represents the overall Thoughts per Theme.

North Bradford Number of Thoughts per Theme



Common comments and concerns:

- (i) loss of friends;
- (ii) loss of support network;
- (iii) loss of the special bonds created with school staff;
- (iv) transitioning schools will be emotionally challenging;
- (v) lack of connection between Crossland Boulevard and the residential units east of Professor Day Drive; and,
- (vi) overall opposition to area A being transferred.

Some suggestions to help mitigate the above concerns were provided:

- (i) allow family choice in moving schools;
- (ii) only new students should be directed to the new school;
- (iii) consider not moving the area shown in purple, instead move an area south of Line 8; and,
- (iv) allow intermediate students to finish at their current school.

There were also a significant number of thoughts raised concerning the proposed transferring of Area C from Fieldcrest Elementary School to Fred C. Cook Public School. The following concerns were raised:

- (i) children attending Fieldcrest Elementary School should not be transferred;
- (ii) not moving schools will provide children stability and eliminate the anxiety of starting a new school; and,
- (iii) only a small number of students are involved in the transfer overall.

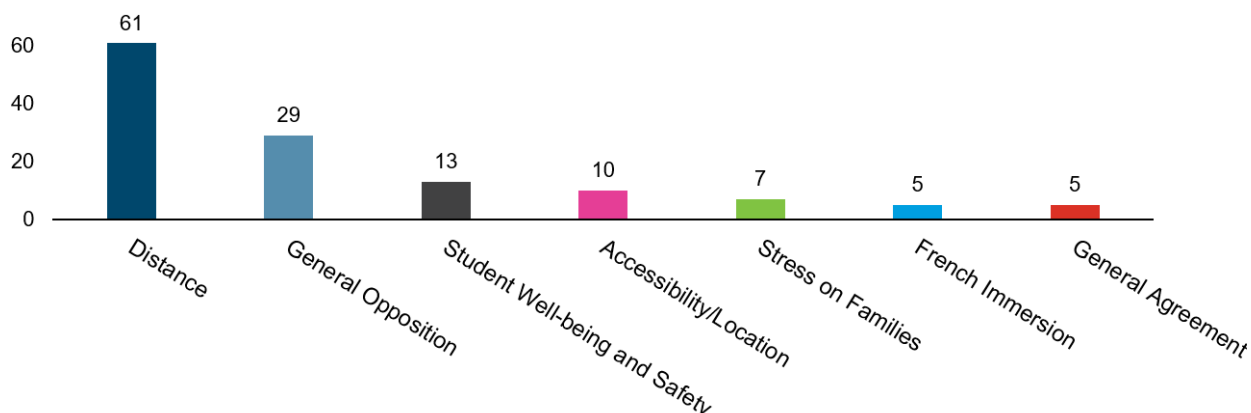
Some suggestions to help mitigate the above concerns were provided:

- (i) allow family choice in moving schools;
- (ii) only new students should be directed to the new school;
- (iii) consider not moving the area shown in Area B, instead move an area south of the Line 8; and,
- (iv) avoid the proposed transfer from Fieldcrest Elementary School to Fred C. Cook Public School.

New South Bradford public school

The new South Bradford public school ThoughtExchange® had approximately 185 participants with 130 thoughts being shared. Feedback was primarily received from Chris Hadfield Public School, and W.H. Day Elementary School (representing both the regular track and the French Immersion community). The following graph represents the overall Thoughts per Theme.

South Bradford Number of Thoughts per Theme



Common comments and concerns:

- (i) distance from the proposed school;
- (ii) overall opposed to Chris Hadfield Public School area being transferred;
- (iii) loss of friends;
- (iv) loss of support network;
- (v) loss of the special bonds created with school staff;
- (vi) transitioning schools will be emotionally challenging; and,
- (vii) the area will be bussed and will not be able to walk.

Some suggestions to help mitigate the above concerns were provided:

- (i) allow family the choice in moving schools;
- (ii) all new students be directed to the new school;
- (iii) allow intermediate students to finish at their current school; and,
- (iv) consider moving another area of the Chris Hadfield Public School that is closer to the new school.

French Immersion Program

Common comments and concerns:

- (i) start the new program in Grade 1 and grow the program;
- (ii) concern regarding securing French teachers;
- (iii) ensuring French resources are provided to the new program;
- (iv) keep French Immersion program intact;
- (v) open French Immersion at Bradford District High School;
- (vi) one of the new schools should be French only Grades 1 to 8;
- (vii) can children who were not able to get into French Immersion be offered another opportunity; and,
- (viii) offer additional intake opportunities.

Staff acknowledge that some uncertainty currently exists, particularly as it relates to transportation and staffing items. Subject to the Board of Trustee's approving the proposed recommendations, clearer information relating to these items will be available as the Simcoe County Student Transportation Consortium (SCSTC) and the Simcoe County District School Board (SCDSB) staff progress through their respective planning processes for the 2022-2023 school year. If approved, transition plans and supports will be cooperatively developed and implemented by the respective school administrations.

Staff appreciate the time and contributions from the community during this process. The information received is valuable and helps guide not only the outcome of this review, but other board practices as well.

4. Final Staff Recommendations

Subsequent to thorough and refined analyses, and taking all factors and feedback into consideration, the following outlines staff's proposed recommendations, with implementation proposed for the September 2022-2023 school year:

1. Accommodate French Immersion Grades 1 to 8 at New North Bradford public school, inclusive of the following feeder schools: Fieldcrest Elementary School, Fred C. Cook Public School, Honourable Earl Rowe Public School and new North Bradford public school (approximately 140 students);
2. Accommodate French Immersion 1 to 8 at W.H. Day Elementary School, inclusive of the following feeder schools: Chris Hadfield Public School, New South Bradford public school, Sir William Osler Public School and W.H. Day Elementary School (approximately 140 students);
3. Transfer northwest portion of Fieldcrest Elementary School (north of Line 8, east of Sideroad 10) to new North Bradford public school (approximately 170 students);
4. Transfer northwest portion of Fred C. Cook Public School (north of Line 8, west of Young Street) to new North Bradford public school (approximately 170 students);
5. Do not transfer the area shown as area C, (Fieldcrest Elementary School to Fred C. Cook Public School, approximately 90 students). This area will continue to be monitored to determine if future boundary adjustments are required as a result of growth in the area;

6. Transfer the southwest portion of Chris Hadfield Public School (south of Holland Street, east of Sideroad 10, west of Langford Boulevard to the new South Bradford public school (approximately 330 students);
7. Transfer the southwest portion of W.H. Day Elementary School (south of 6th Line, west of Canal Road to the new South Bradford public school (approximately 140 students);
8. Remove holding status for the area located south of Holland Street, east of Sideroad 10, west of Langford Boulevard, shown as Area A from Honourable Earl Rowe Public School to new South Bradford public school;
9. Remove holding status for the area located south of Holland Street, along Miller Park Avenue, west of Melbourne Drive, shown as Area D from Sir William Osler Public School to Chris Hadfield Public School;
10. Remove holding status for the area located south of Line 6, west of Zima Parkway, east of Simcoe Road, shown as Area E from Sir William Osler Public School to new South Bradford public school;
11. Remove holding status for the area located north of Line 6, west of Zima Parkway, east of Simcoe Road, shown as Area C from Honourable Earl Rowe Public School to new South Bradford public school;
12. Remove holding status for the area located south of Line 6, west of Walker Avenue, east of Simcoe Road, shown as Area B from Honourable Earl Rowe Public School to W.H. Day Elementary School; and,
13. As per Policy 2317 – School Attendance Areas, provide the option of grandfathering current Grade 7 students.

The areas identified for transfer can be found in APPENDICES D, E, and F. The proposed new Bradford attendance areas outlined in the final recommendations are shown in APPENDICES G, H and I. The staff recommendations resemble the scenarios as presented through the ThoughtExchange®; however, the final staff recommendations do not propose transferring the area denoted as area C in the new North Bradford public school proposal, from Fieldcrest Elementary School to Fred C. Cook Public School. Further monitoring of this area is required to ensure balanced school enrolment can be achieved once the new schools are opened and growth continues. Not transferring any existing students in the area does align with some feedback received through ThoughtExchange®. Fred C. Cook Public School will be under capacity at the outset; however, there are several large condominiums and further development that is currently under construction which will increase the overall utilization of the school over time. Although Fieldcrest Elementary School will remain over capacity, the size of the school's yard provides the opportunity for additional portables, and enrolment is expected to decrease over the short to medium term.

Overall, the proposed accommodation strategy amongst the group of schools will be beneficial in the short and medium term, resulting in school populations with more efficient and effective programming.

The following table provides a summary of the projected enrolment and utilization if the staff recommendation is implemented. While enrolment is better balanced, it is evident that schools will continue to be over utilized now and into the future. Staff believe that the proposed enrolment balance is manageable and does allow for flexibility with regards to portable accommodation to accommodate future growth as required.

Projected Enrolment 2022-2023

Elementary School	OTG	Portables 2022	Program	Students	Utilization
Chris Hadfield PS	507	5	JK-8 RT	624	123%
Fieldcrest PS	516	12	JK-8 RT	815	158%
Fred C. Cook PS	412	0	JK-8 RT	352	85%
North Bradford ps	501	0	JK-8 RT	340	68%
			1-8 FI	140	28%
			Sum	480	96%
South Bradford ps	599	0	JK-8 RT	540	90%
W.H. Day ES	559	1	JK-8 RT	393	70%
			FI	182	33%
			Sum	575	103%

The proposed staff recommendations also provide a growth opportunity for the French Immersion programs. Bradford has demonstrated a need for a second French Immersion program; the new schools afford the board an opportunity to provide a greater French Immersion intake. In this instance, a French only school is not feasible as the Ministry of Education funding received for the new schools was predicated on growth in the community. Maintaining the French Immersion program at a single location in the community of Bradford, with a dual English program format, is also problematic. Such an approach would require low English program enrolment to meet school capacities, thereby creating program delivery challenges.

Walkability and distance to school was one of the main concerns received through the consultation. Within the proposed boundaries of the new North Bradford public school, the area denoted as B, currently does not have road connectivity through Crossland Boulevard, resulting in this area being bussed to the new school. A Crossland Boulevard connection to Professor Day Drive will be constructed in the future. Once the connection is built, a majority of the homes within the new proposed North Bradford public school will be within the walk zone.

The proposed boundaries of the new South Bradford public school take into consideration students who are currently within the Chris Hadfield Public School walk zone. Transferring these students to the new South Bradford public school will require these students to be bused. The majority of Chris Hadfield Public School's attendance area is within the walk zone of the school, with the exception of some new development located at the corner of Sideroad 10 and 6th Line. Unfortunately, due to very high population density and in order to appropriately balance enrolment, over 300 students need to be transferred to the new school.

Other areas within the existing Chris Hadfield Public School attendance area were considered for transfer. Through analysis of age cohorts, density and future growth that has yet to materialize, staff believe the current recommendation best ensures balanced enrolment between the schools and minimizes impacts. Staff acknowledge the difficulty of creating a situation where students who can currently walk are now being recommended to transfer to a new school where bussing will be required; however, given student population density and site limitations, there is no alternative.

5. Conclusion

As the SCDSB continues to react and prepare for future growth, change is often necessary. Although the construction of new schools in a community is an exciting and welcomed event, staff do acknowledge the difficulties and challenges associated with the transition of students and programs. Staff believe that the recommendations outlined best address the current accommodation and program pressures at the schools involved in this review, while taking into account feedback from the community and adhering to Policy 2317 – School Attendance Areas. The recommended changes would alleviate accommodation pressures and create viable and sustainable school populations and programs. The proposed recommendations also take into account future additional residential growth and sets the stage for further actions, when required. Subject to Board of Trustee approval, and in order to assist students, staff and parents/guardians, and administrative staff will begin immediate transition planning in order to make the experience positive and exciting.

RECOMMENDATIONS

1. That the Business and Facilities Standing Committee recommend that the Board approve the proposed attendance areas effective September 2022, as set out in APPENDICES G and H of Report No. BF-D-1, Attendance Area Review 2021:18 – Town of Bradford West Gwillimbury Elementary Schools, dated October 6, 2021.
2. That the Business and Facilities Standing Committee recommend that the Board approve the opening and partial transfer of the French Immersion program, from W.H. Day Elementary School to new North Bradford public school effective September 2022, as set out in Appendix I of Report No. BF-D-1, Attendance Area Review 2021:18 – Town of Bradford West Gwillimbury Elementary Schools, dated October 6, 2021.

Respectfully submitted by:

Corry Van Nispen
Superintendent of Business and Facility Services

October 6, 2021

APPENDIX A – Pages 1 to 33

Bradford Elementary Schools Attendance Area Review
ThoughtExchange® Presentation

Bradford Elementary Schools

Attendance Area Review

Communication and feedback

Your voice is important as we work on new attendance boundaries for the Bradford elementary schools. Due to COVID-19, the board will be using an online communication tool, ThoughtExchange®, to share information and collect comments related to the attendance area review. ThoughtExchange® is an online consultation tool where you will provide feedback by answering one key question:

What feedback would you like to share regarding the new attendance area and French Immersion program changes?

While you're there, you can rank the thoughts and ideas added from other parents/guardians. Your name is not collected, and no one will know who you are, or which ideas are yours.

You can participate from May 25 to June 8, 2021. Continue to return to the ThoughtExchange® often during this time so that you can view and rank new thoughts and ideas from others as they are added.

After the closure of the ThoughtExchange®, the data collected will be evaluated and used to finetune the proposed attendance and program review areas. A report will be provided to the SCDSB's Business and Facilities Committee in the fall of 2021. Implementation of the boundaries will occur upon the opening of the new north Bradford elementary school, which is expected in September 2022.

Follow along to see the attendance area proposal(s) and accompanying rationale, including answers to some frequently asked questions.

Bradford Attendance Area Review

The 2017-2018 SCDSB Capital Plan recommended staff undertake an attendance area review (AAR) for Chris Hadfield PS, Fieldcrest ES, Fred C. Cook PS and W.H. Day ES. Two new Bradford elementary schools have been approved by the Ministry of Education, and attendance area reviews are required to create the new school boundaries. This is great news for the students, staff and families in the Bradford area as it will alleviate the school capacity issues which have been the recent reality and will balance enrolment across the region.

The goal of the new boundaries will be to:

- maximize walk zones
- minimize busing
- reduce accommodation pressures
- ensure new attendance boundaries consider approved development applications
- maximize French Immersion offerings
- ensure school sites have adequate space for parking and portables for future growth
- determine the placement of county and district special education classes
- address the need to accommodate students who live in a holding area

SCDSB Policy 2317 – School Attendance Areas sets out the guidelines for the establishment of school attendance areas.

Administrative Procedures Memorandum A7000 – School Attendance Areas is the procedure used to guide implementation of Policy 2317.

Current enrolment and other data

This chart represents the enrolment, utilization and portable count for Bradford elementary schools as of Oct. 31, 2020:

2020					
Elementary School	OTG 20	Portables 2020	Program	Students	Utilization
Chris Hadfield PS	507	18		893	176%
Fieldcrest ES	516	18		917	178%
Fred C. Cook PS	412	5		499	121%
Hon. Earl Rowe PS	219	0		201	92%
Sir William Osler PS	173	0		129	75%
W.H. Day ES	559	11	JK-8 RT	468	84%
			1-8 FI	325	58%
			Sum	793	142%
Total	2386	52		3432	144%

Note:

JK-8 RT – Junior Kindergarten to grade 8 Regular Track

1-8 FI - Grade 1 to Grade 8 French Immersion

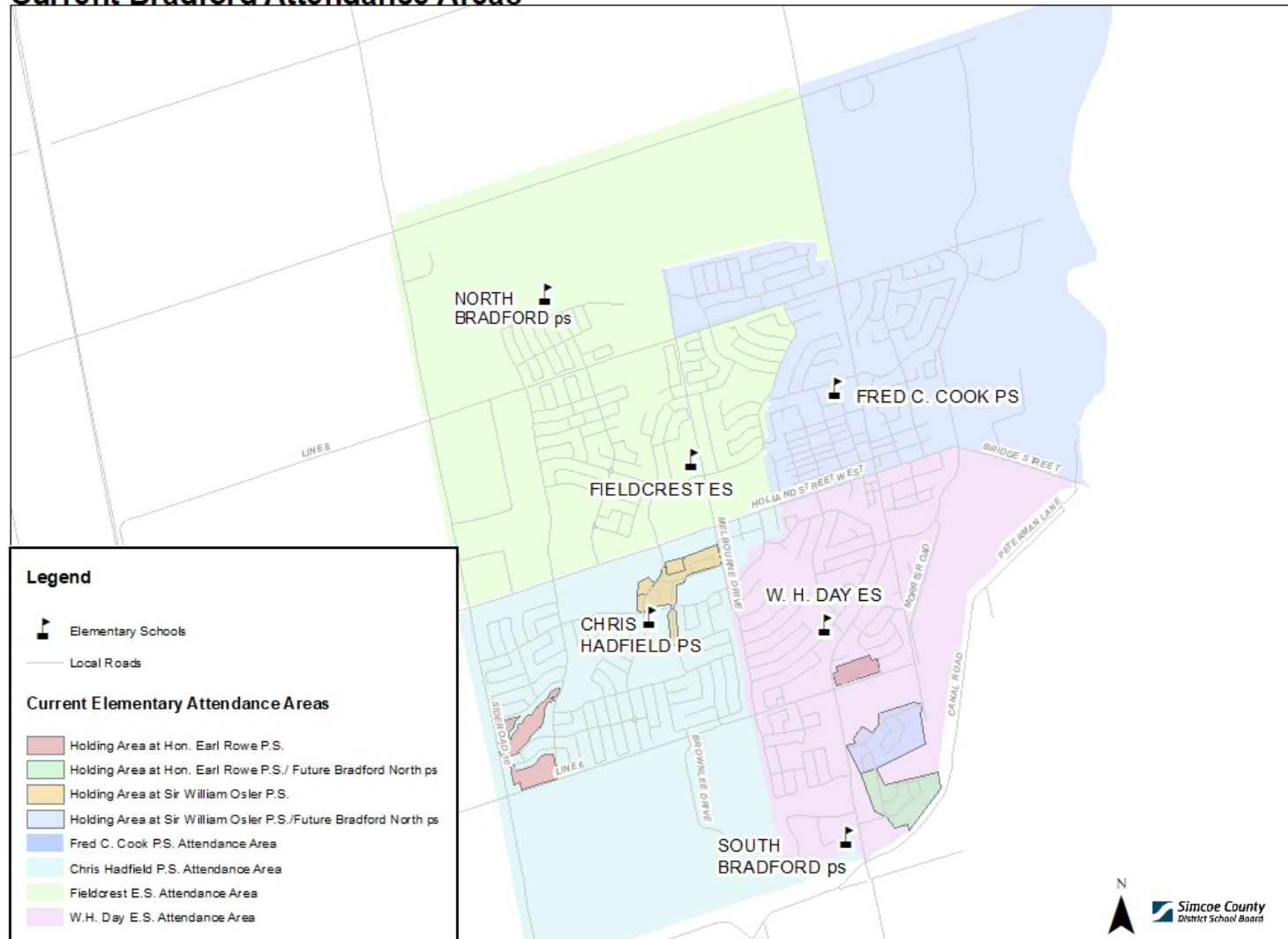
New north Bradford elementary school

The new north Bradford elementary school has been designed, and construction has begun. The anticipated opening date is September 2022. It is located at 400 Crosslands Boulevard, across from Kidd Street and Rogers Trail.



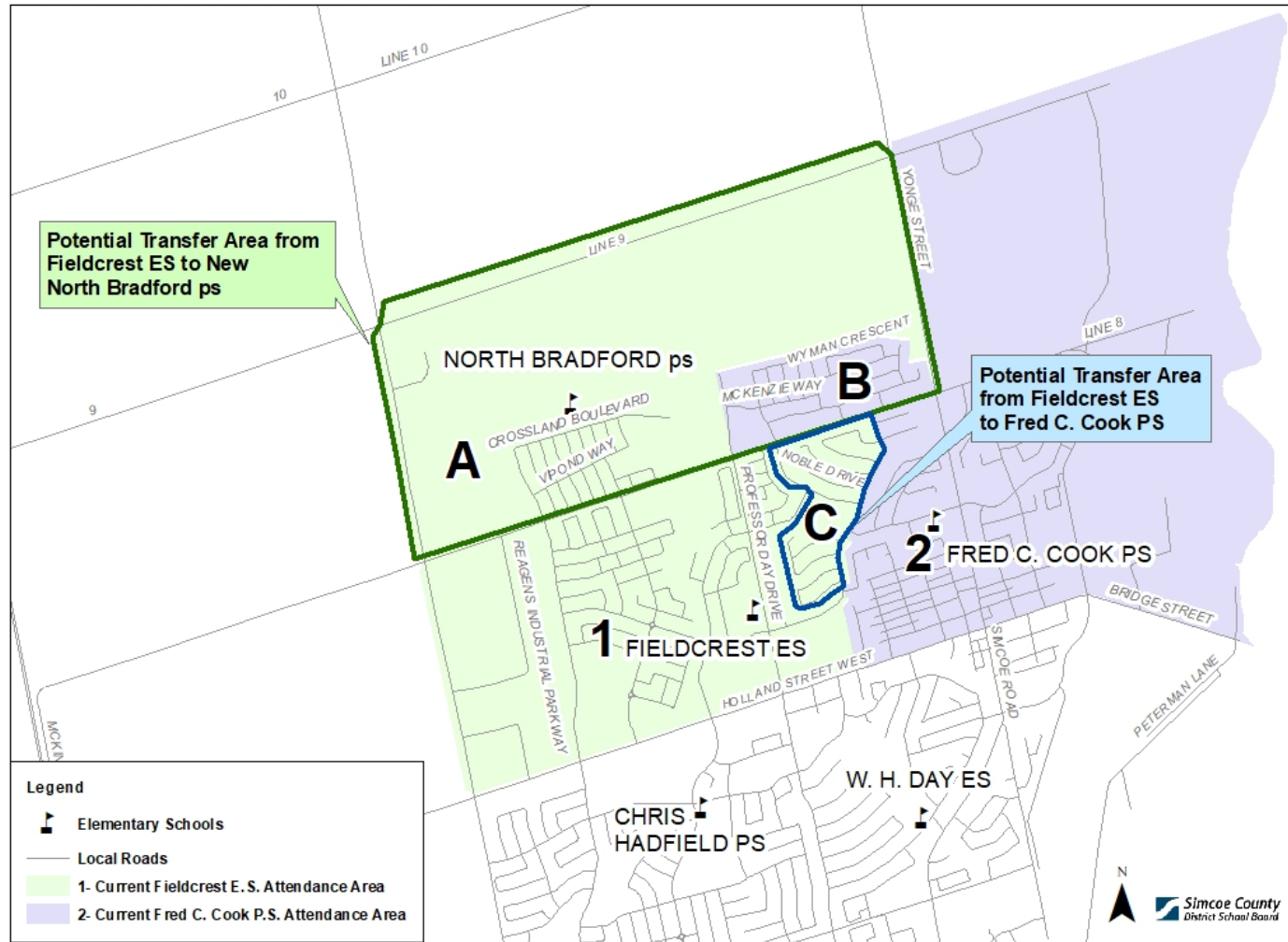
Areas involved in the AAR

Current Bradford Attendance Areas



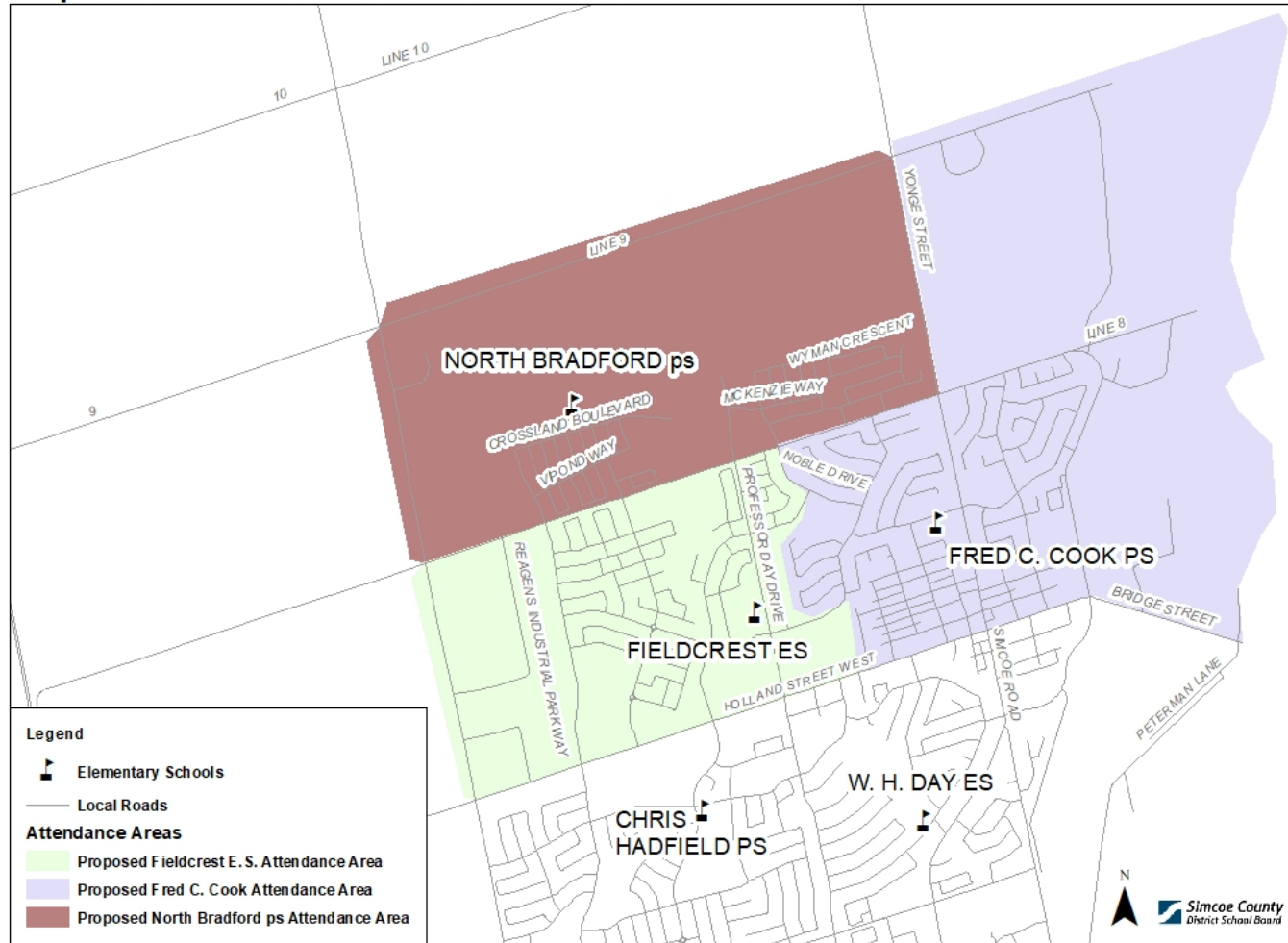
Areas under review (non-French Immersion)

Bradford Areas Under Review



Proposed attendance areas

Proposed Bradford Attendance Areas North of Holland St.



Establishing new attendance boundaries

The new north Bradford elementary school's projected population upon opening will be approximately 480 students. The proposed boundaries would involve the following number of students:

New north Bradford elementary school:

- 170 students from Fred C Cook PS
- 170 students from Fieldcrest ES
- 140 French Immersion students from W.H. Day ES

Fred C Cook PS:

- 90 students from Fieldcrest ES to Fred C Cook PS

Projected enrolment upon opening of the new school:

Elementary School	OTG	Portables 2022	Program	Students	Utilization
North Bradford elementary school	501	0	JK-8 RT	340	68%
			1-8 FI	140	28%
			Sum	480	96%
Fieldcrest PS	516	8	JK-8 RT	725	141%
Fred C. Cook PS	412	1	JK-8 RT	442	107%
Total	1429	9		1647	115%

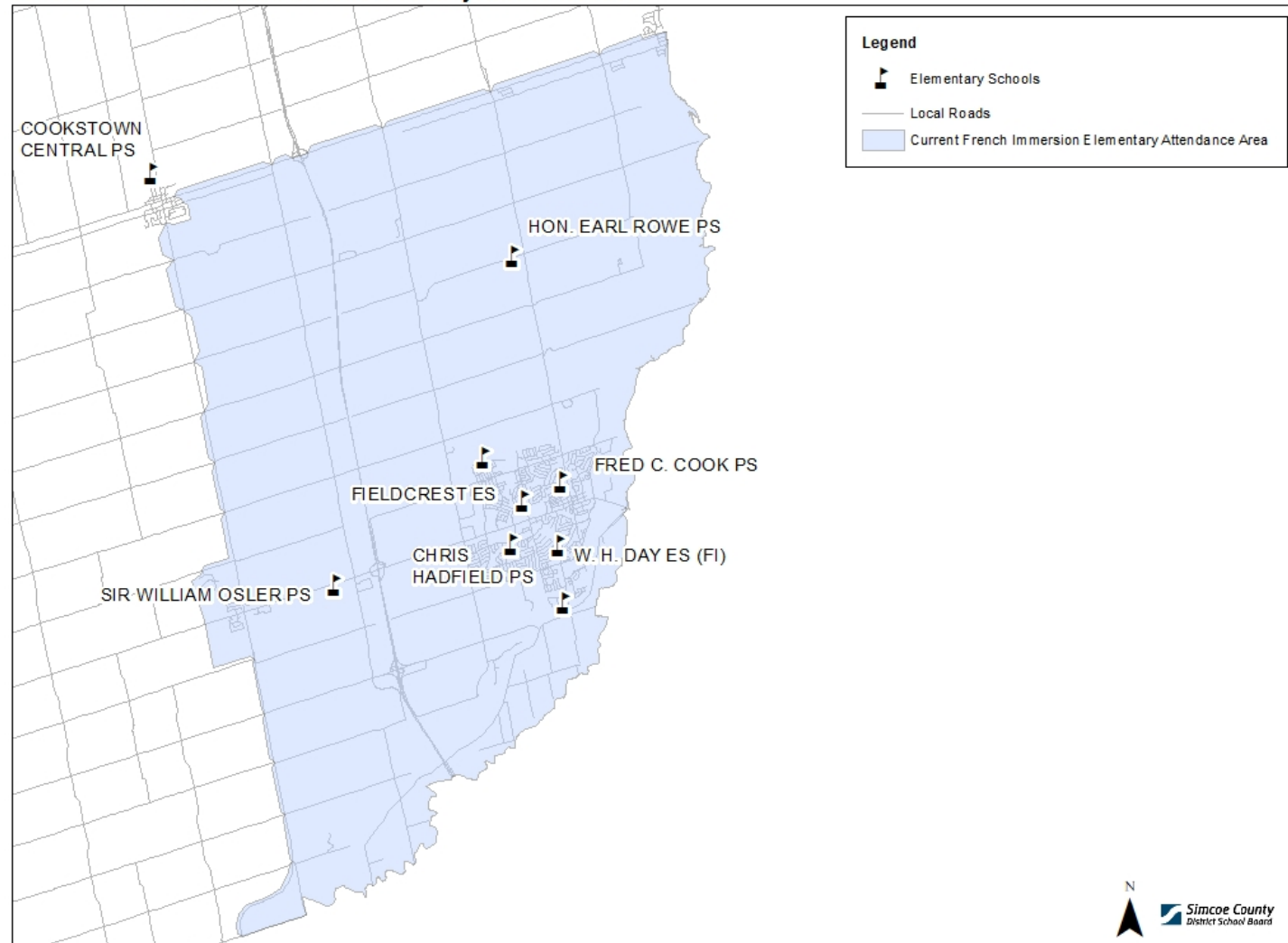
Note:

JK-8 RT – Junior Kindergarten to grade 8 Regular Track

1-8 FI - Grade 1 to Grade 8 French Immersion

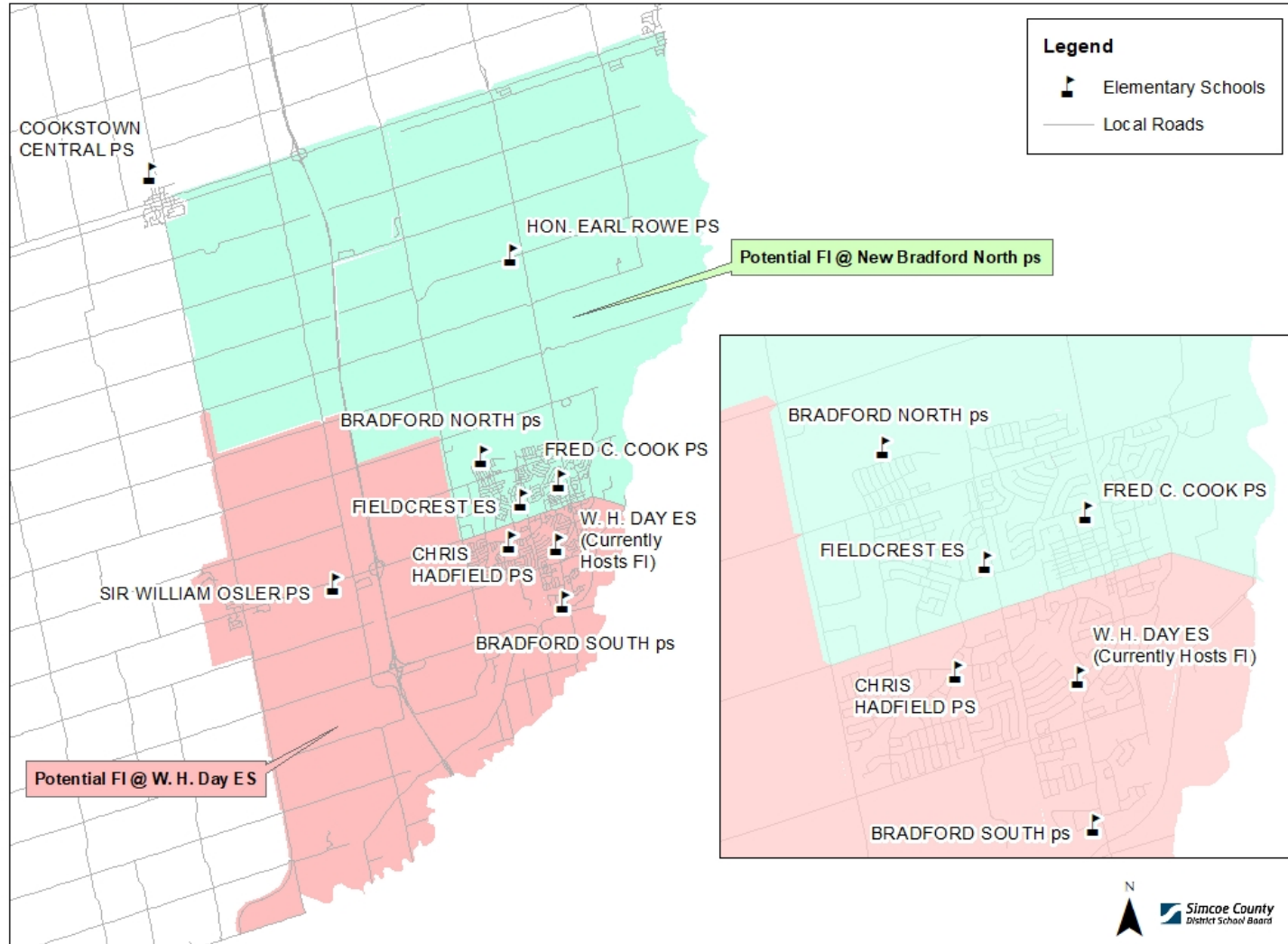
Areas under review (French Immersion)

Current Bradford French Immersion Elementary Attendance Area



Areas under review (French Immersion)

Bradford French Immersion Areas Under Review



Transition strategy

The principals from Chris Hadfield PS and Fieldcrest ES are currently serving as design principals for the new schools. They will ensure that transition of students and educators are well planned, and that students and staff are supported.

All Bradford elementary schools are affected by the opening of the new schools, so transition activities can be coordinated and celebrated together.

Attendance boundaries will be implemented in September 2022, and our current Grade 6 students (who will be in Grade 8 in September 2022) will have the choice to transfer or remain in their current school to graduate.

Questions and answers

When will the boundary changes occur?

New attendance boundaries will take effect upon opening of the new schools.

What are the policies for children entering Grade 8 the year of the move? Do they have to go to the new school(s)?

No, board practice is to permit all Grade 8 students to decide if they want to go to the new school or remain at their current school. Grade 8 students wishing to stay at their current school will continue to have busing, if eligible for transportation.

What type of transitions are put into place to create this new school?

As we get closer to the date, the local school principals will work on exciting events to ensure students from each of the schools meet and are a part of creating the culture of the new school.

My child has special needs. If they are part of the new school boundary, how will they be accommodated at the new school?

The board's special education team, including the current school's staff, will be involved in transition planning in order to ensure that there is a seamless and supportive transition to the new school.

Questions and answers

Will there be before and after school care at the new schools?

Yes, a before and after school care program will be established for opening day. Once a childcare provider has been selected, communication will be sent home on how to register for the program.

Will there be child care at the new school?

The new north Bradford elementary school received capital funding to construct a two-room child care. Once a childcare provider has been selected, information on how to register for the program will be shared.

When will bell times be established?

Once the boundaries have been approved, the Simcoe County Student Transportation Consortium will review the new boundaries and determine bell times based upon busing needs.

How will the schools be named?

A naming committee will be formed in the 2021-22 school year. The recommended names will be submitted to the SCDSB Board of Trustees for their approval.

Next steps and timelines

We value and encourage your input on the proposed plan.

The ThoughtExchange® will be open for feedback from May 25 to June 8, 2021. After the closure of the ThoughtExchange®, the data collected will be evaluated and used to modify the proposed attendance and program review areas. A report will be provided to the SCDSB's Business and Facilities Committee of the Board in the fall of 2021.

Implementation of the boundaries will occur upon the opening of the new north Bradford elementary school, which is expected in September 2022.

Questions?

- For questions about ThoughtExchange®, contact research@scdsb.on.ca
- For clarification on details related to the attendance area review, contact planning_Bradford@scdsb.on.ca

Bradford Elementary Schools

Attendance Area Review

Communication and feedback

Your voice is important as we work on new attendance boundaries for the Bradford elementary schools. Due to COVID-19, the board will be using an online communication tool, ThoughtExchange®, to share information and collect comments related to the attendance area review. ThoughtExchange® is an online consultation tool where you will provide feedback by answering one key question:

What feedback would you like to share regarding the new attendance area and French Immersion program changes?

While you're there, you can rank the thoughts and ideas added from other parents/guardians. Your name is not collected, and no one will know who you are, or which ideas are yours.

You can participate from May 25 to June 8, 2021. Continue to return to the ThoughtExchange® often during this time so that you can view and rank new thoughts and ideas from others as they are added.

After the closure of the ThoughtExchange®, the data collected will be evaluated and used to finetune the proposed attendance and program review areas. A report will be provided to the SCDSB's Business and Facilities Committee in the fall of 2021. Implementation of the boundaries will occur upon the opening of the new north Bradford elementary school, which is expected in September 2022.

Follow along to see the attendance area proposal(s) and accompanying rationale, including answers to some frequently asked questions.

Bradford Attendance Area Review

The 2017-2018 SCDSB Capital Plan recommended staff undertake an attendance area review (AAR) for Chris Hadfield PS, Fieldcrest ES, Fred C. Cook ES and W.H. Day ES. Two new Bradford elementary schools have been approved by the Ministry of Education, and attendance area reviews are required to create the new school boundaries. This is great news for the students, staff and families in the Bradford area as it will alleviate the school capacity issues which have been the recent reality and will balance enrolment across the region.

The goal of the new boundaries will be to:

- maximize walk zones
- minimize busing
- reduce accommodation pressures
- ensure new attendance boundaries consider approved development applications
- maximize French Immersion offerings
- ensure school sites have adequate space for parking and portables for future growth
- determine the placement of county and district special education classes
- address the need to accommodate students who live in a holding area

SCDSB Policy 2317 – School Attendance Areas sets out the guidelines for the establishment of school attendance areas.

Administrative Procedures Memorandum A7000 – School Attendance Areas is the procedure used to guide implementation of Policy 2317.

Current enrolment and other data

This chart represents the enrolment, utilization, and portable count for Bradford elementary schools as of Oct. 31, 2020:

2020					
Elementary School	OTG 20	Portables 2020	Program	Students	Utilization
Chris Hadfield PS	507	18		893	176%
Fieldcrest ES	516	18		917	178%
Fred C. Cook PS	412	5		499	121%
Hon. Earl Rowe PS	219	0		201	92%
Sir William Osler PS	173	0		129	75%
W.H. Day ES	559	11	JK-8 RT	468	84%
			1-8 FI	325	58%
			Sum	793	142%
Total	2386	52		3432	144%

Note:

JK-8 RT – Junior Kindergarten to grade 8 Regular Track

1-8 FI - Grade 1 to Grade 8 French Immersion

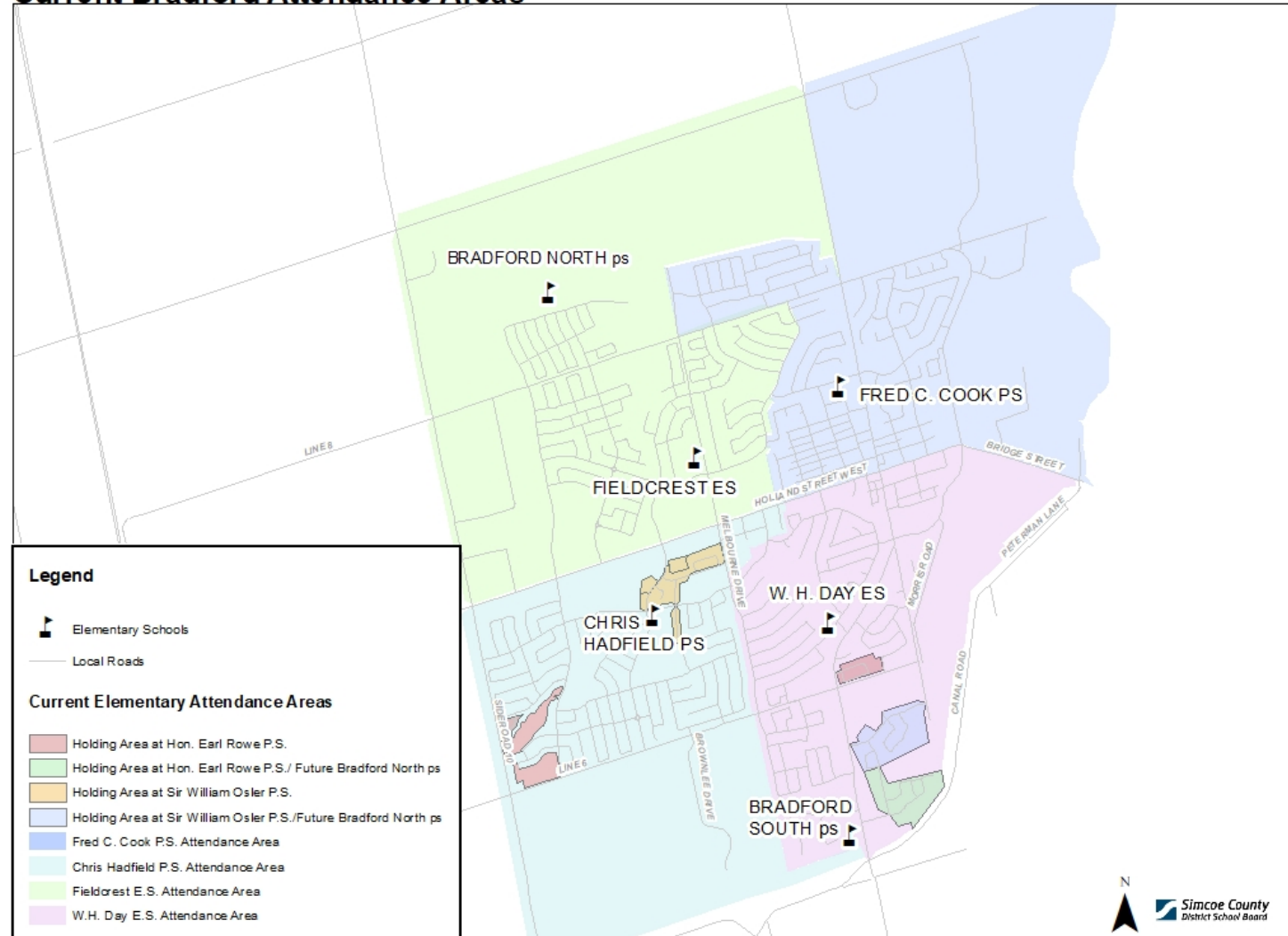
New south Bradford elementary school

The new south Bradford elementary school has been designed and a site plan application has been submitted. Building permits are expected in Spring 2021, with an anticipated opening date of September 2022. It is located at 742 Simcoe Road, across from Danube Lane and the Portuguese Cultural Centre.



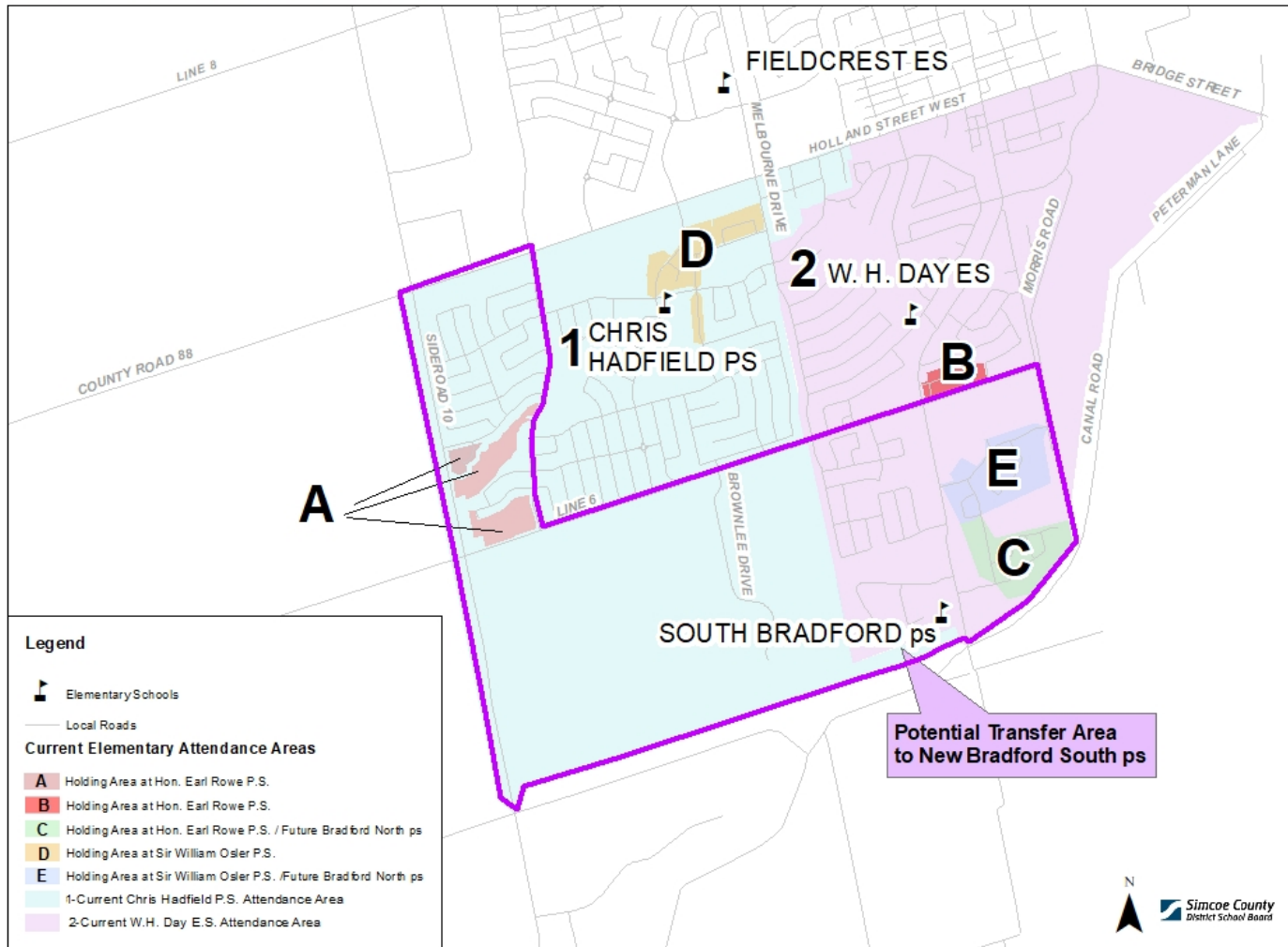
Areas involved in the AAR

Current Bradford Attendance Areas



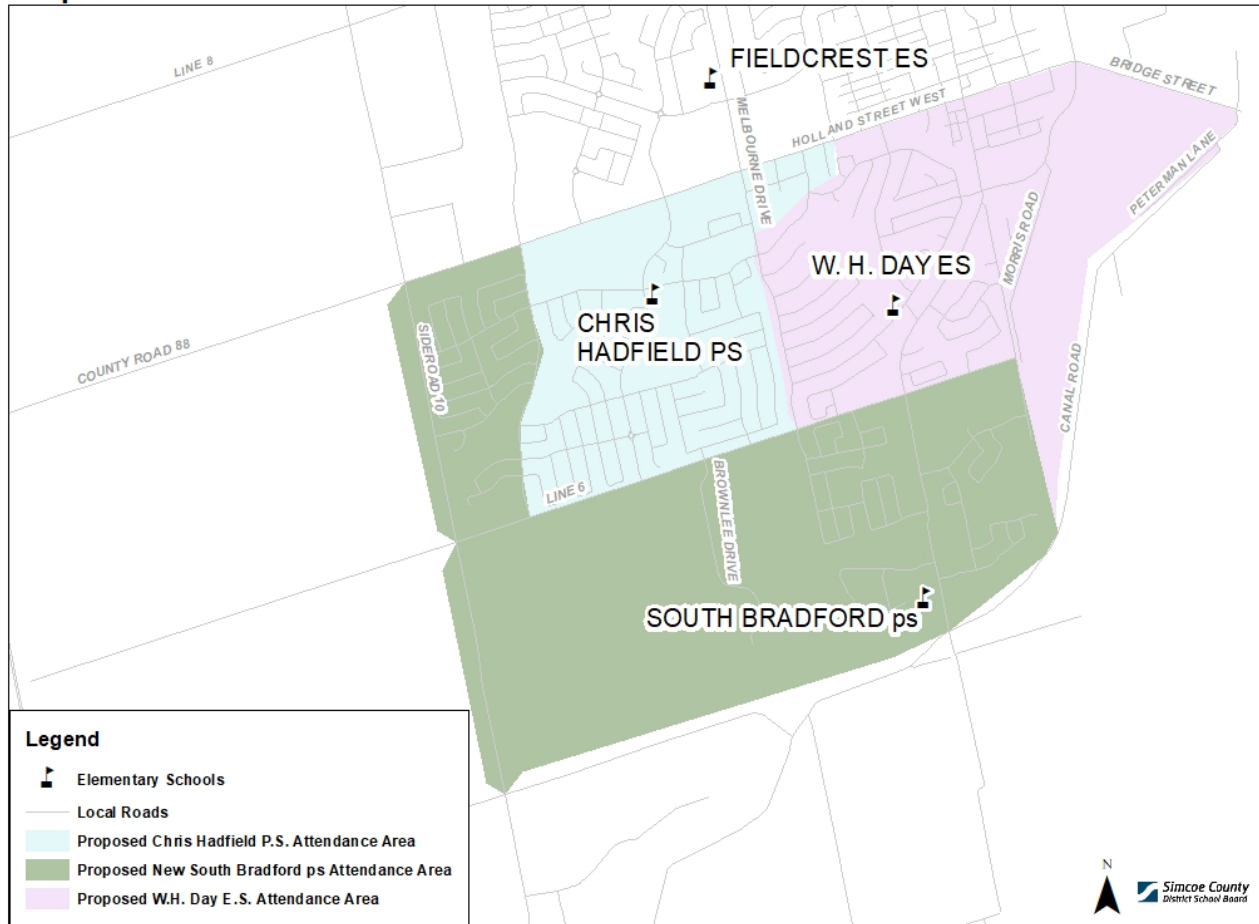
Areas under review (non-French Immersion)

Bradford Areas Under Review



Proposed attendance areas

Proposed Bradford Attendance Areas South of Holland St.



Establishing new attendance boundaries

The new south Bradford elementary school's projected population upon opening will be approximately 540 students. The proposed boundaries would involve the following number of students:

New South Bradford elementary school:

- 330 students from Chris Hadfield PS
- 140 students from W.H. Day ES
- 35 growth students holding at Hon. Earl Rowe PS
- 35 students holding at Sir. William Osler PS

W.H. Day ES

- 140 French Immersion students to north Bradford elementary school
- will continue to offer French Immersion
- holding areas will be assessed upon implementation of boundary changes

Chris Hadfield PS

- 26 students currently being bused to Sir William Osler PS, whose homes are located directly across from Chris Hadfield PS, will attend Chris Hadfield PS

Establishing new attendance boundaries

Projected enrolment upon opening of the new school:

Elementary School	OTG	Portables 2022	Program	Students	Utilization
Chris Hadfield PS	507	5	JK-8 RT	624	123%
W.H. Day ES	559	1	JK-8 RT	393	70%
			FI	182	33%
			Sum	575	103%
South Bradford elementary	599	0	JK-8 RT	540	90%
Total	1665	5		1739	104%

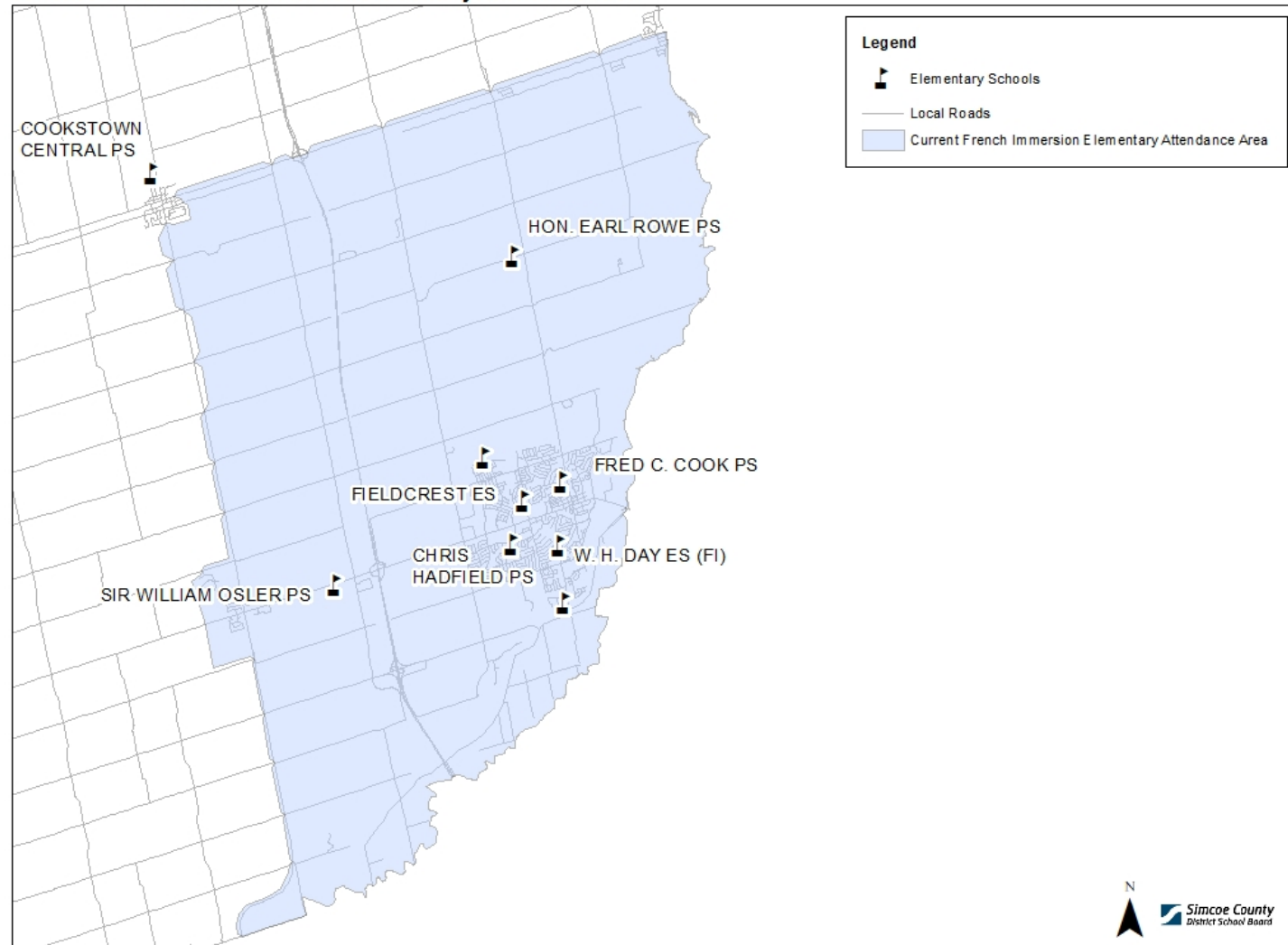
Note:

JK-8 RT – Junior Kindergarten to grade 8 Regular Track

1-8 FI - Grade 1 to Grade 8 French Immersion

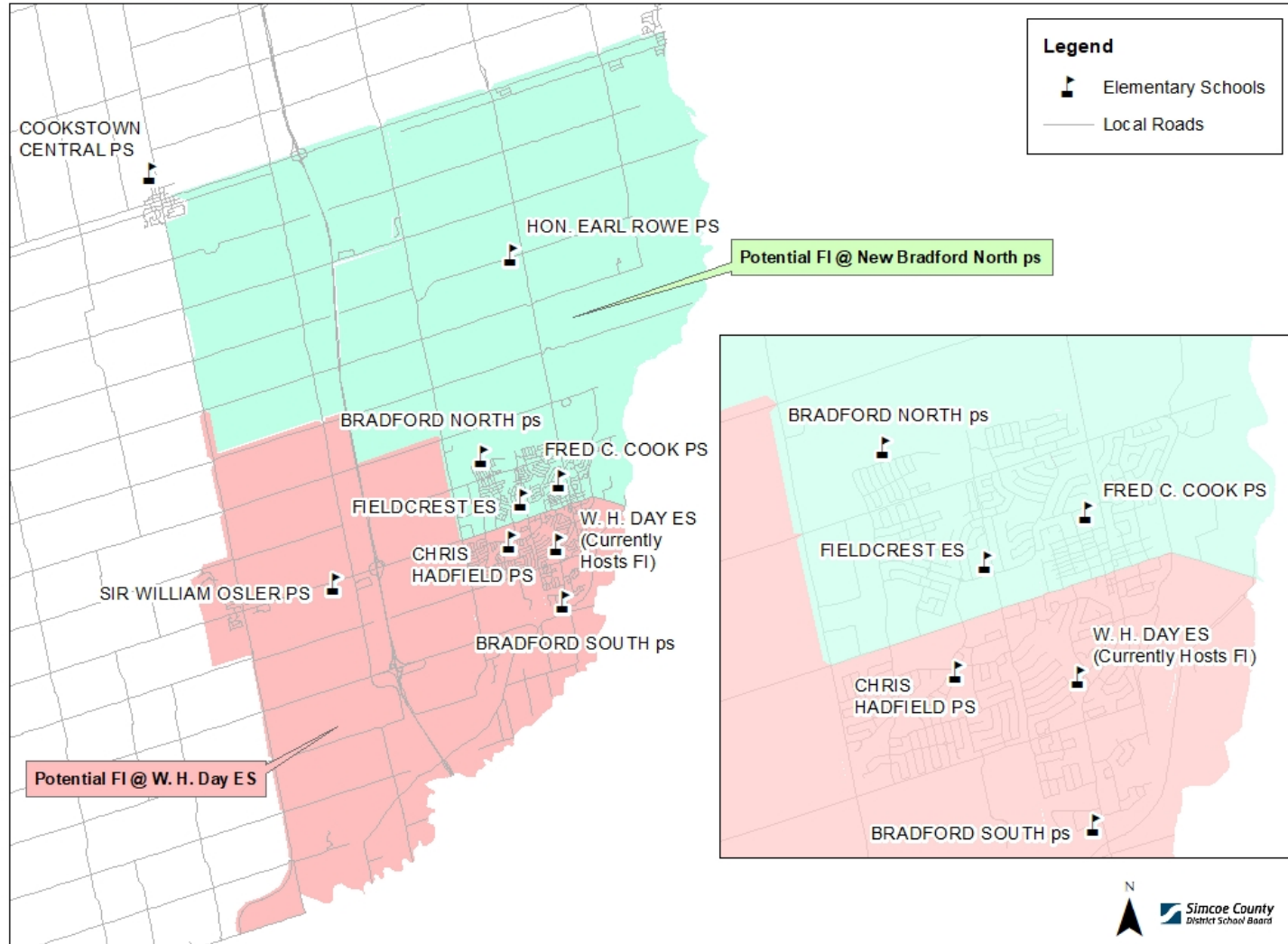
Areas under review (French Immersion)

Current Bradford French Immersion Elementary Attendance Area



Areas under review (French Immersion)

Bradford French Immersion Areas Under Review



Transition strategy

The principals from Chris Hadfield PS and Fieldcrest PS are currently serving as design principals for the new schools. They will ensure that transition of students and educators are well planned, and that students and staff are supported.

All Bradford elementary schools are affected by the opening of the new schools, so transition activities can be coordinated and celebrated together.

Attendance boundaries will be implemented in September 2022, and our current Grade 6 students (who will be in Grade 8 in September 2022) will have the choice to transfer or remain in their current school to graduate.

We continue to target a 2022-23 opening for the new south Bradford elementary school. Communication regarding construction updates will be provided over the course of the next year.

Questions and answers

When will the boundary change occur?

New attendance boundaries will take effect upon opening of the new schools.

What are the policies for children entering Grade 8 the year of the move? Do they have to go to the new school(s)?

No, board practice is to permit all Grade 8 students to decide if they want to go to the new school or remain at their current school. Grade 8 students wishing to stay at their current school will continue to have busing, if eligible for transportation.

What type of transitions are put into place to create this new school?

As we get closer to the date, the local school principals will work on exciting events to ensure students from each of the schools meet and are a part of creating the culture of the new school.

My child has special needs. If they are part of the new school boundary, how will they be accommodated at the new school?

The board's special education team, including the current school's staff, will be involved in transition planning in order to ensure that there is a seamless and supportive transition to the new school.

Questions and answers

Will there be before and after school care at the new schools?

Yes, a before and after school care program will be established for opening day. Once a childcare provider has been selected, communication will be sent home on how to register for the program.

Will there be child care at the new school?

No. Funding for a child care centre was not provided by the Ministry of Education.

When will bell times be established?

Once the boundaries have been approved, the Simcoe County Student Transportation Consortium will review the new boundaries and determine bell times based upon busing needs.

How will the schools be named?

A naming committee will be formed in the 2021-22 school year. The recommended names will be submitted to the SCDSB Board of Trustees for their approval.

Next steps and timelines

We value and encourage your input on the proposed plan.

The ThoughtExchange® will be open for feedback from May 25 to June 8, 2021. After the closure of the ThoughtExchange®, the data collected will be evaluated and used to modify the proposed attendance and program review areas. A report will be provided to the SCDSB's Business and Facilities Committee of the Board in the fall of 2021.

Implementation of the boundaries will occur upon the opening of the new south Bradford elementary school, which is expected in September 2022.

Questions?

- For questions about ThoughtExchange®, contact research@scdsb.on.ca
- For clarification on details related to the attendance area review, contact planning_Bradford@scdsb.on.ca

APPENDIX B – Pages 1 to 6

Bradford Area ThoughtExchange® Summary Report

RESULTS OF THE BRADFORD ATTENDANCE AREA REVIEW ThoughtExchanges®

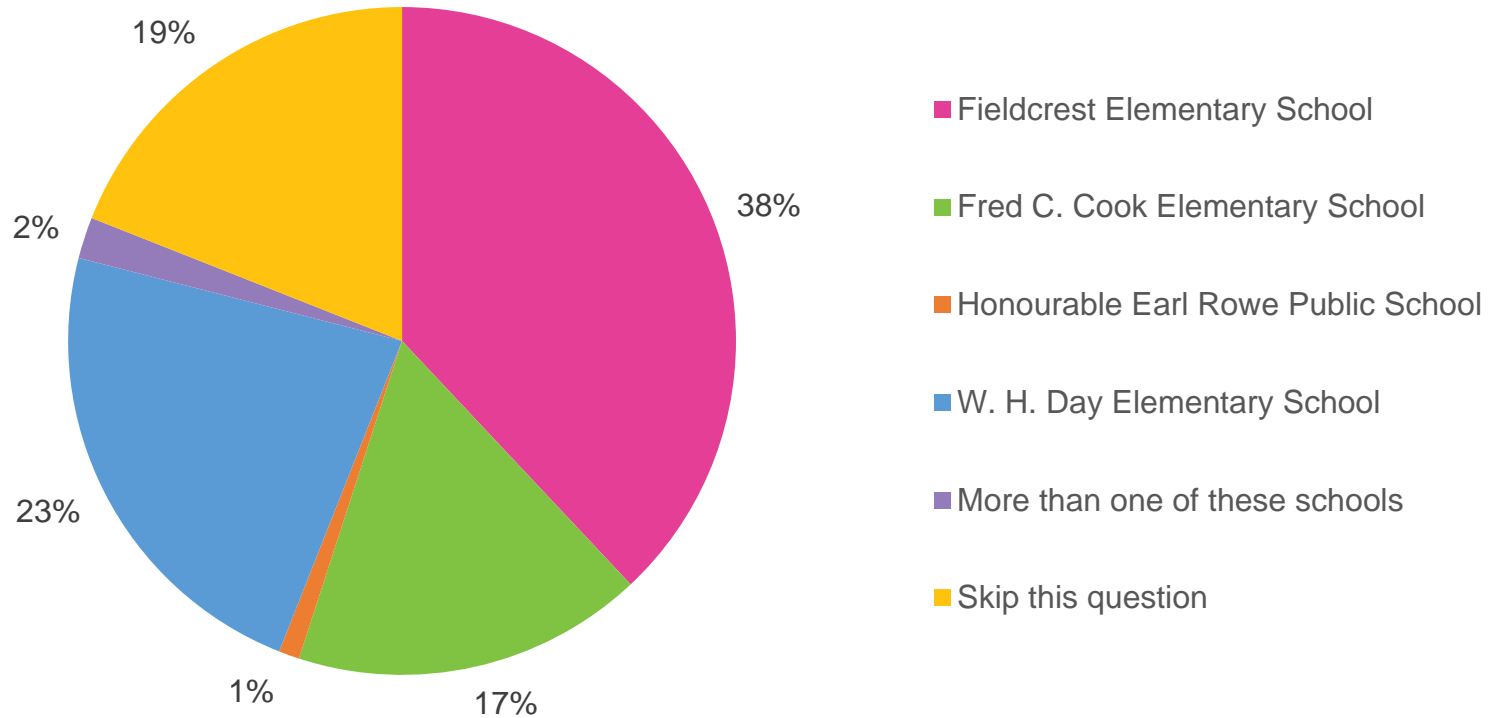
North Bradford

 177
Participants

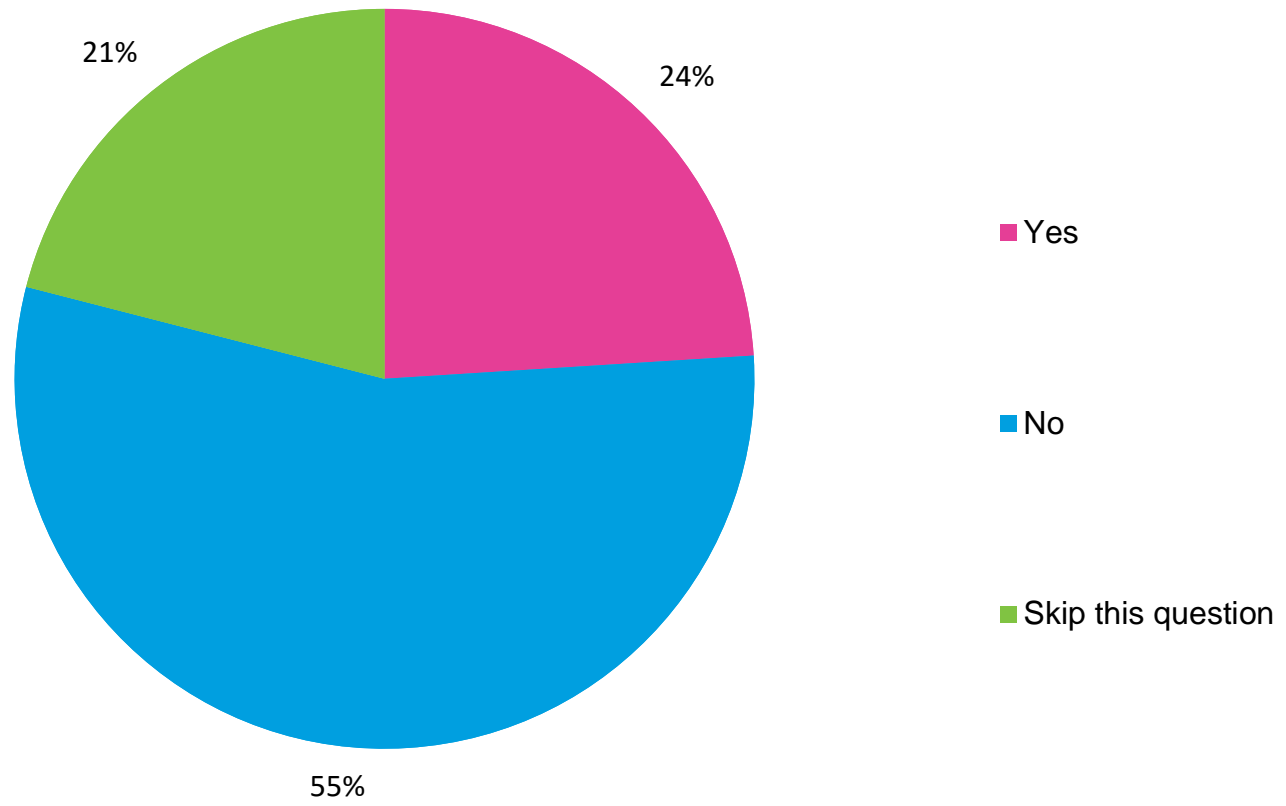
 141
Thoughts

 3,996
Ratings

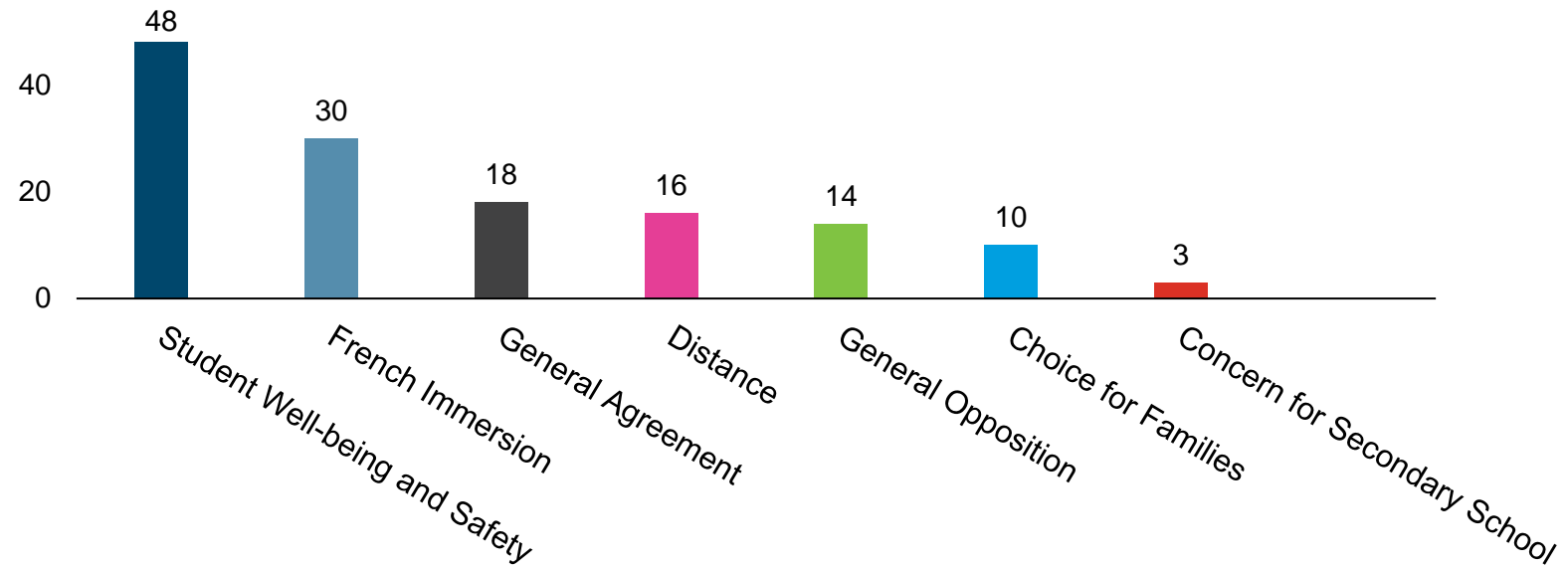
Child(ren) attend this school:



Child(ren) Enrolled in French Immersion:



North Bradford Number of Thoughts per Theme



South Bradford



185
Participants

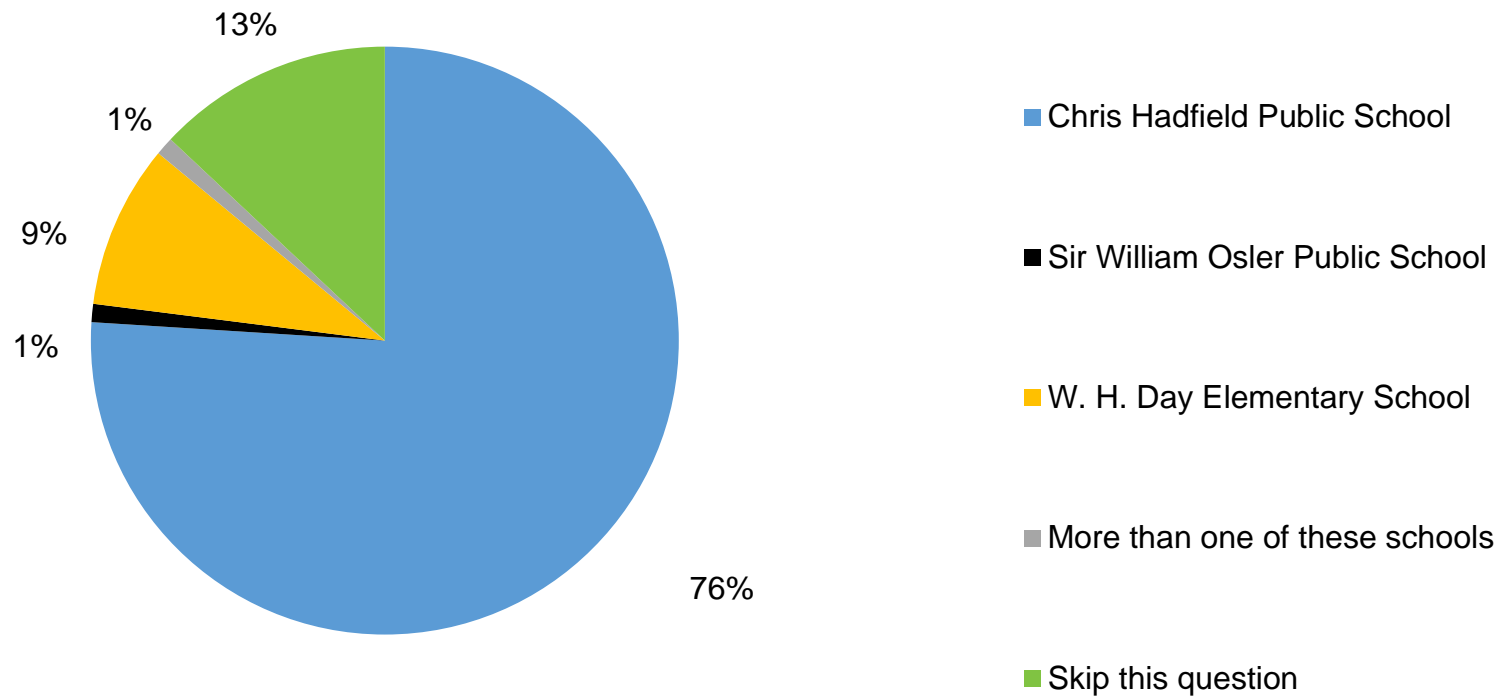


130
Thoughts

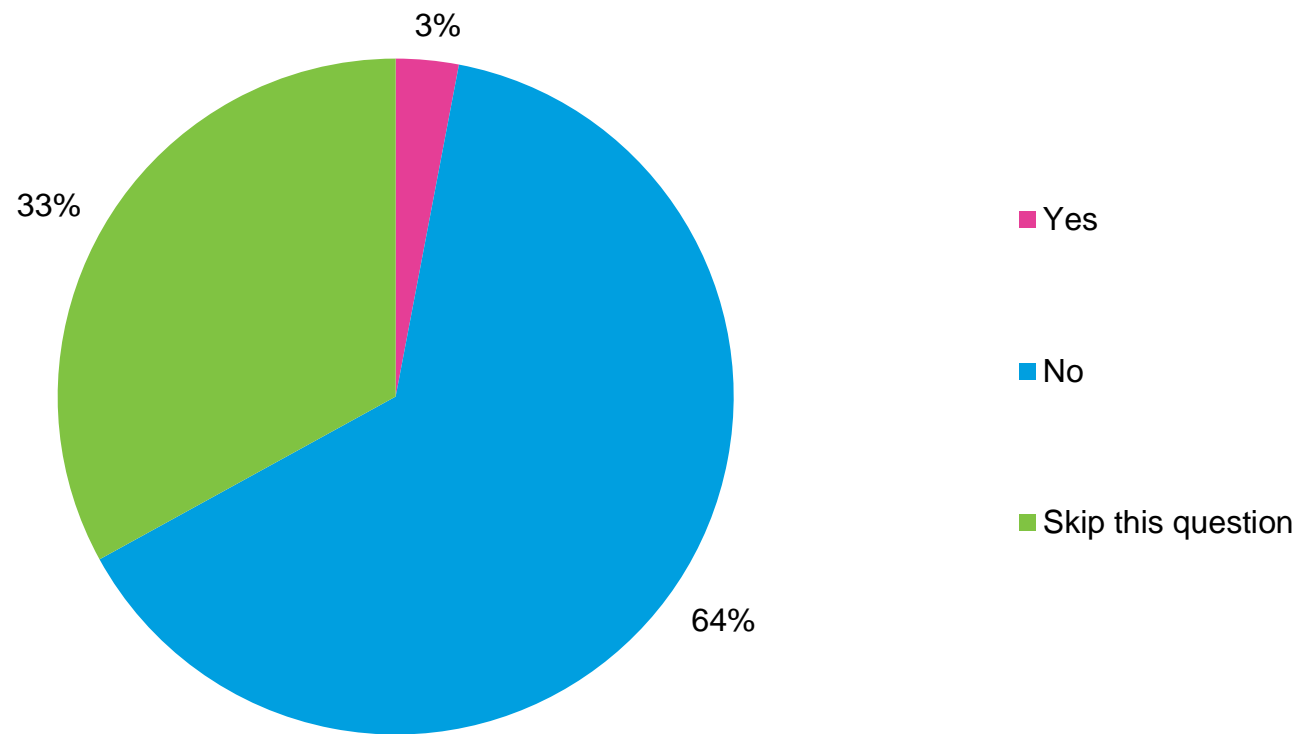


2,805
Ratings

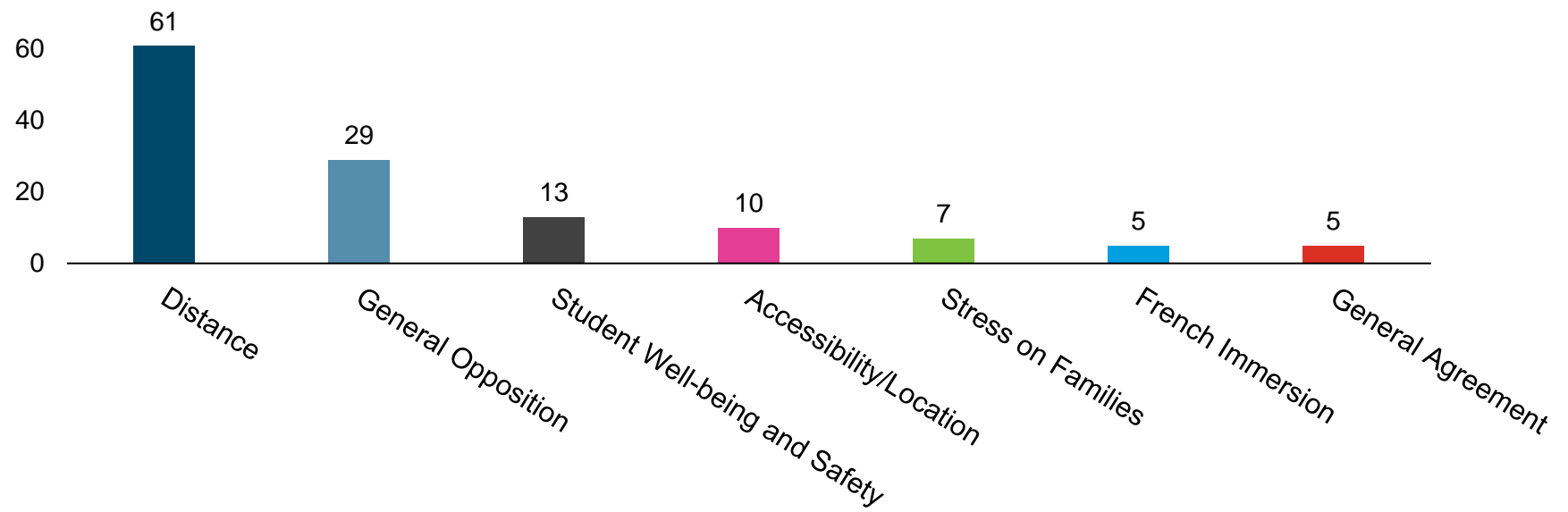
Child(ren) Attend this School:



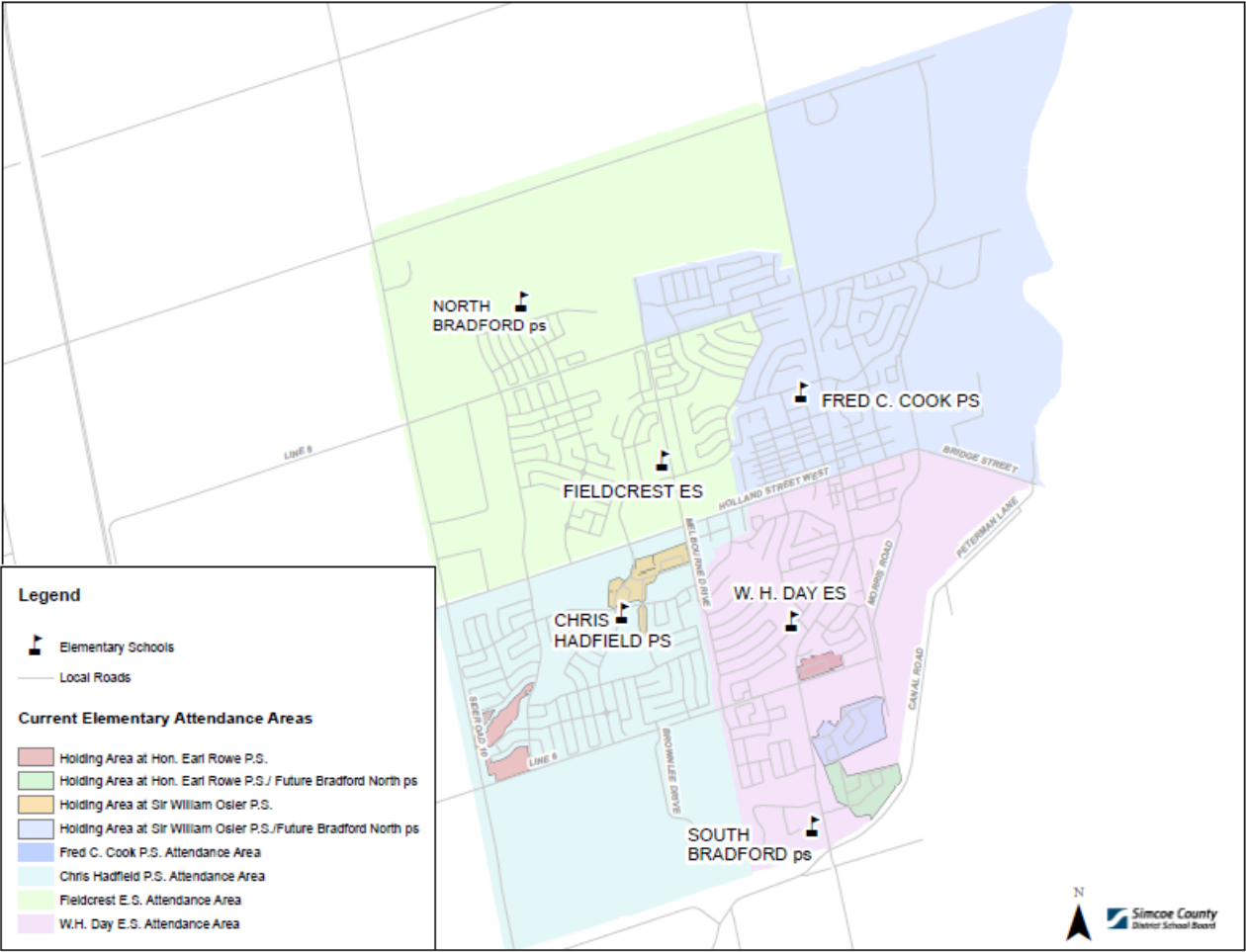
Child(ren) Enrolled in French Immersion:



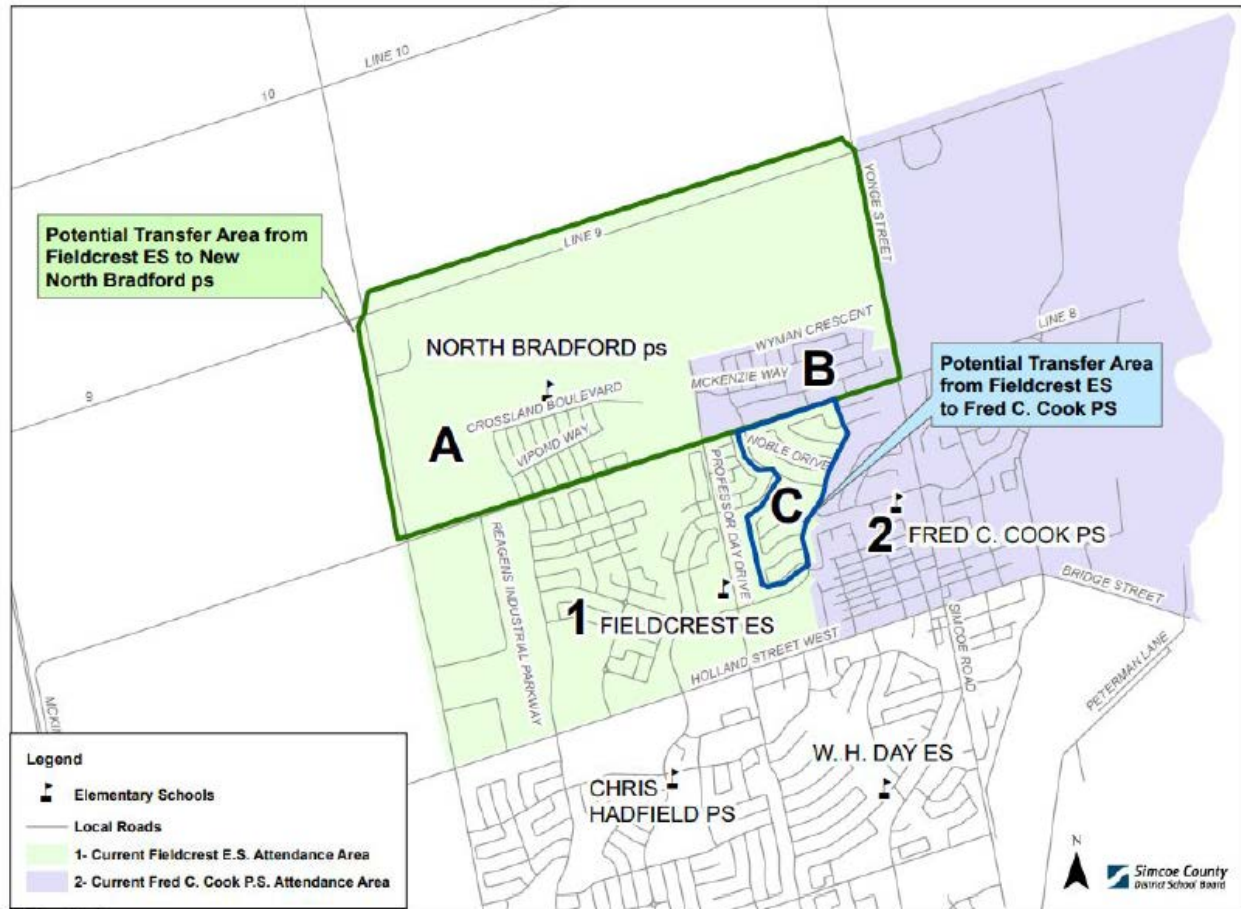
South Bradford Number of Thoughts per Theme



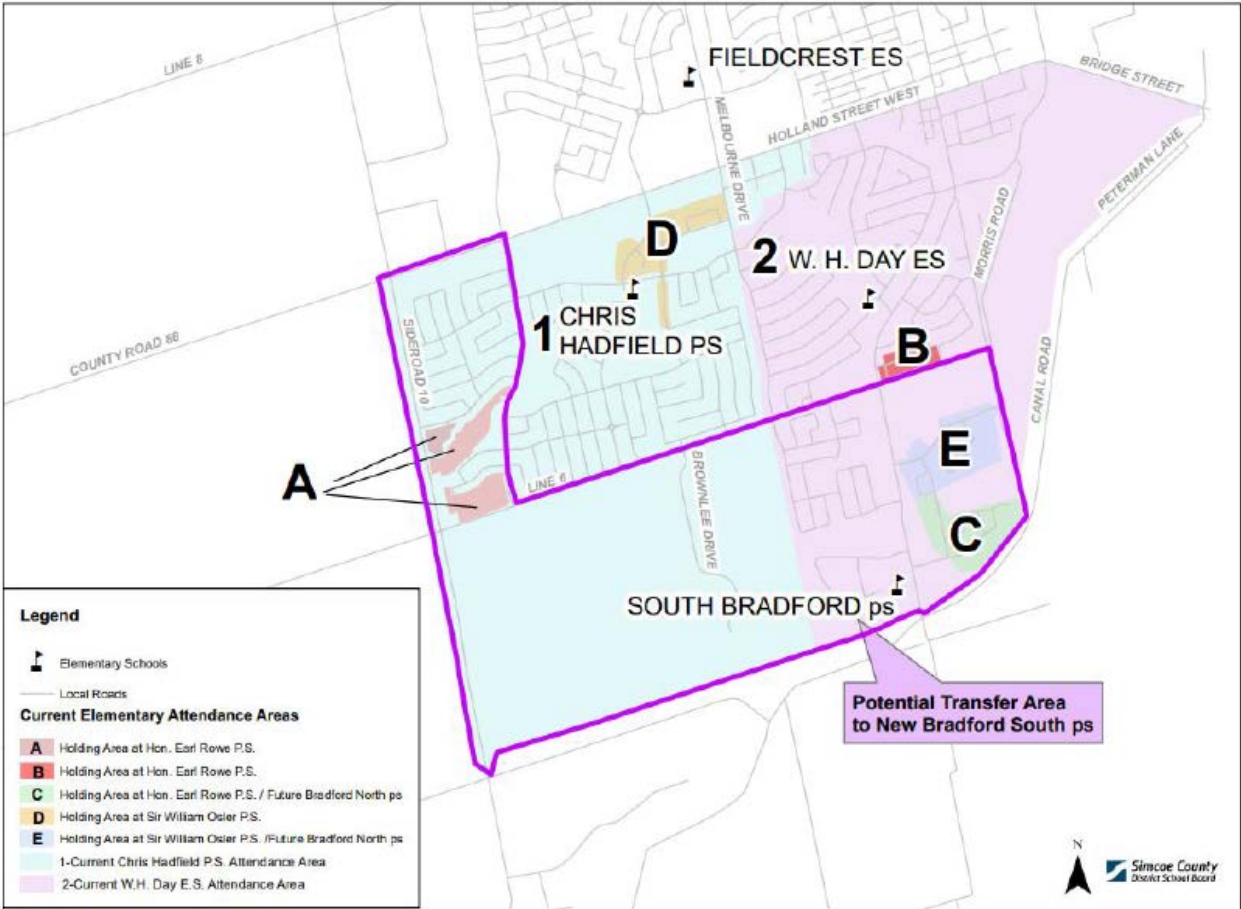
Current Bradford Elementary Attendance Areas



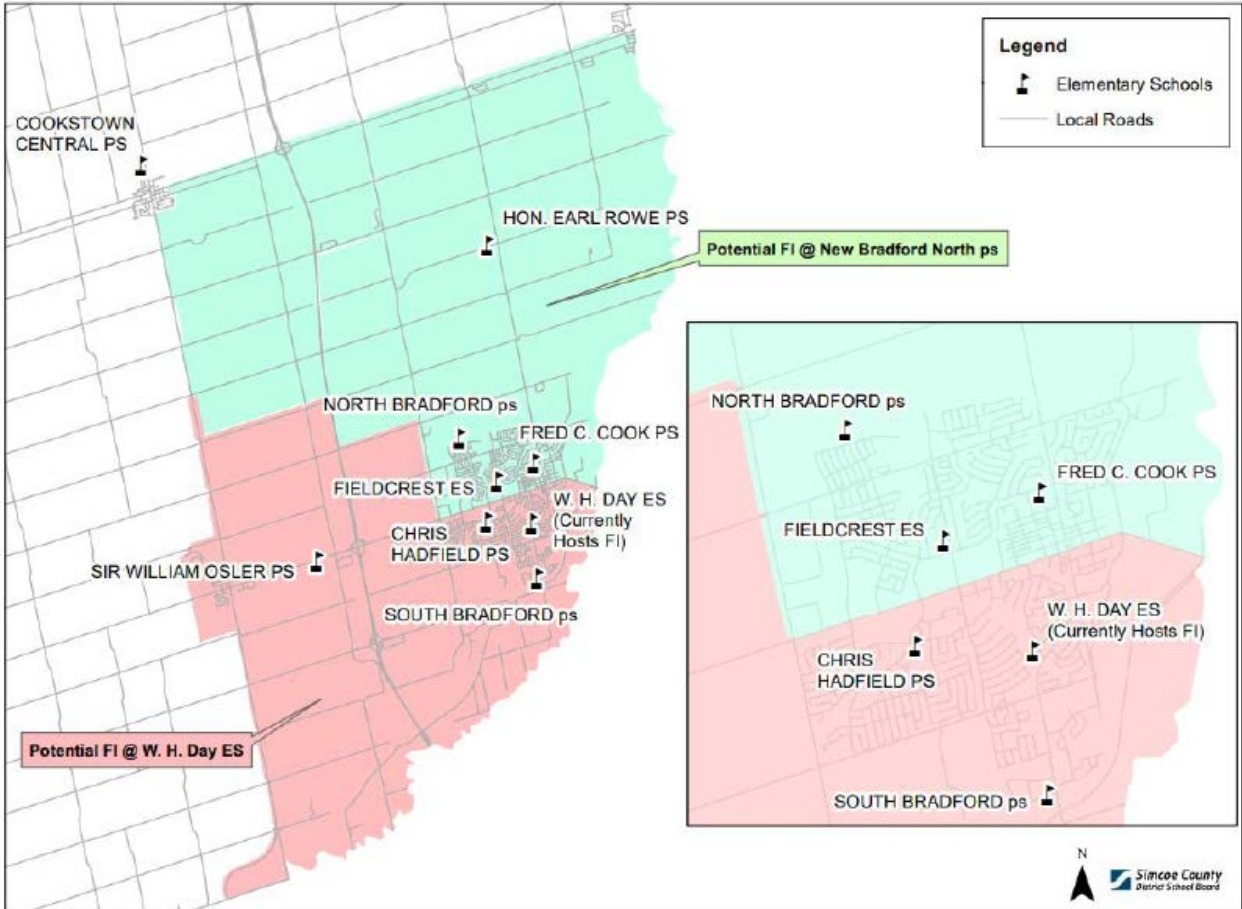
North Areas Under Consideration



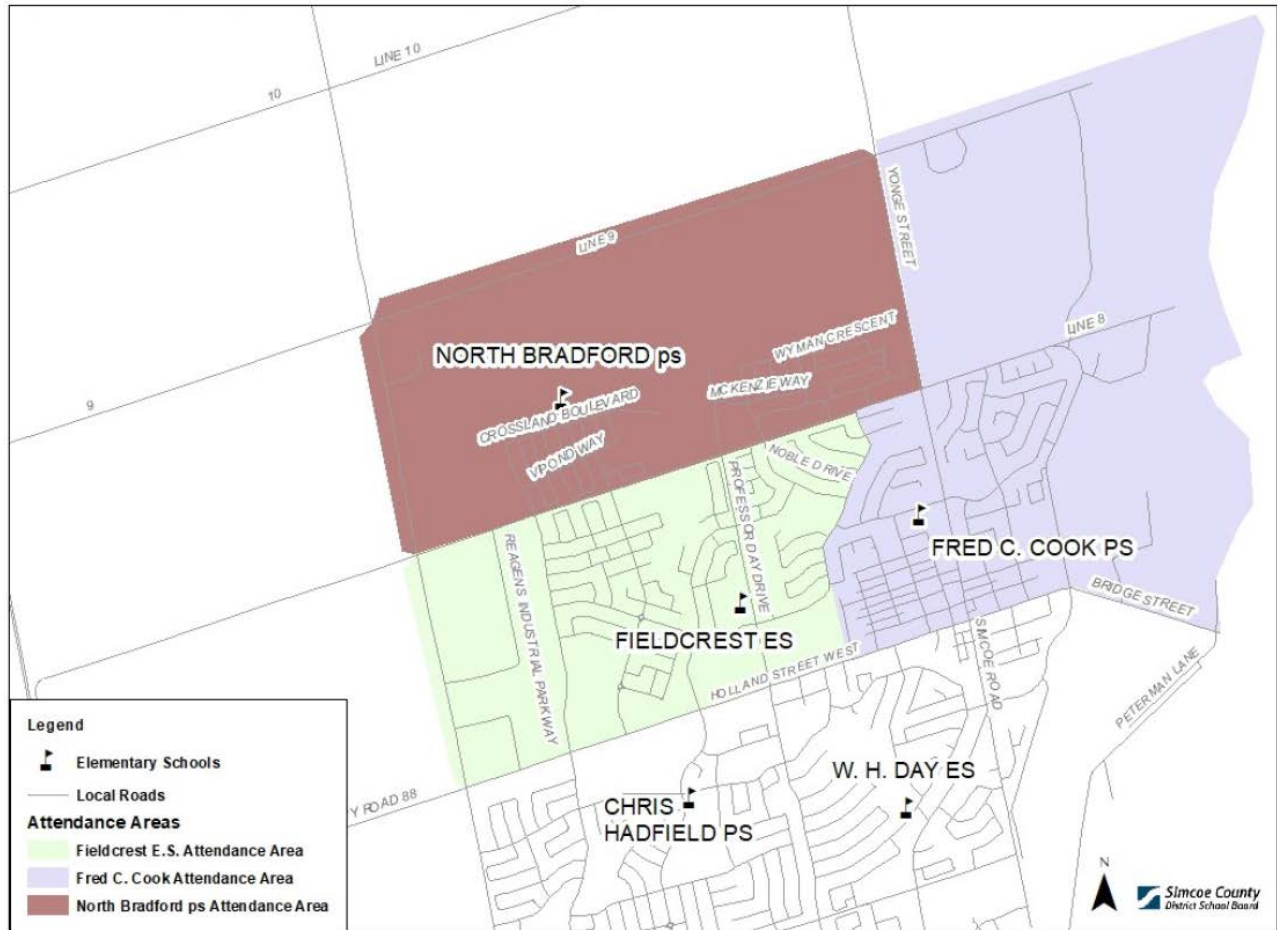
South Areas Under Consideration



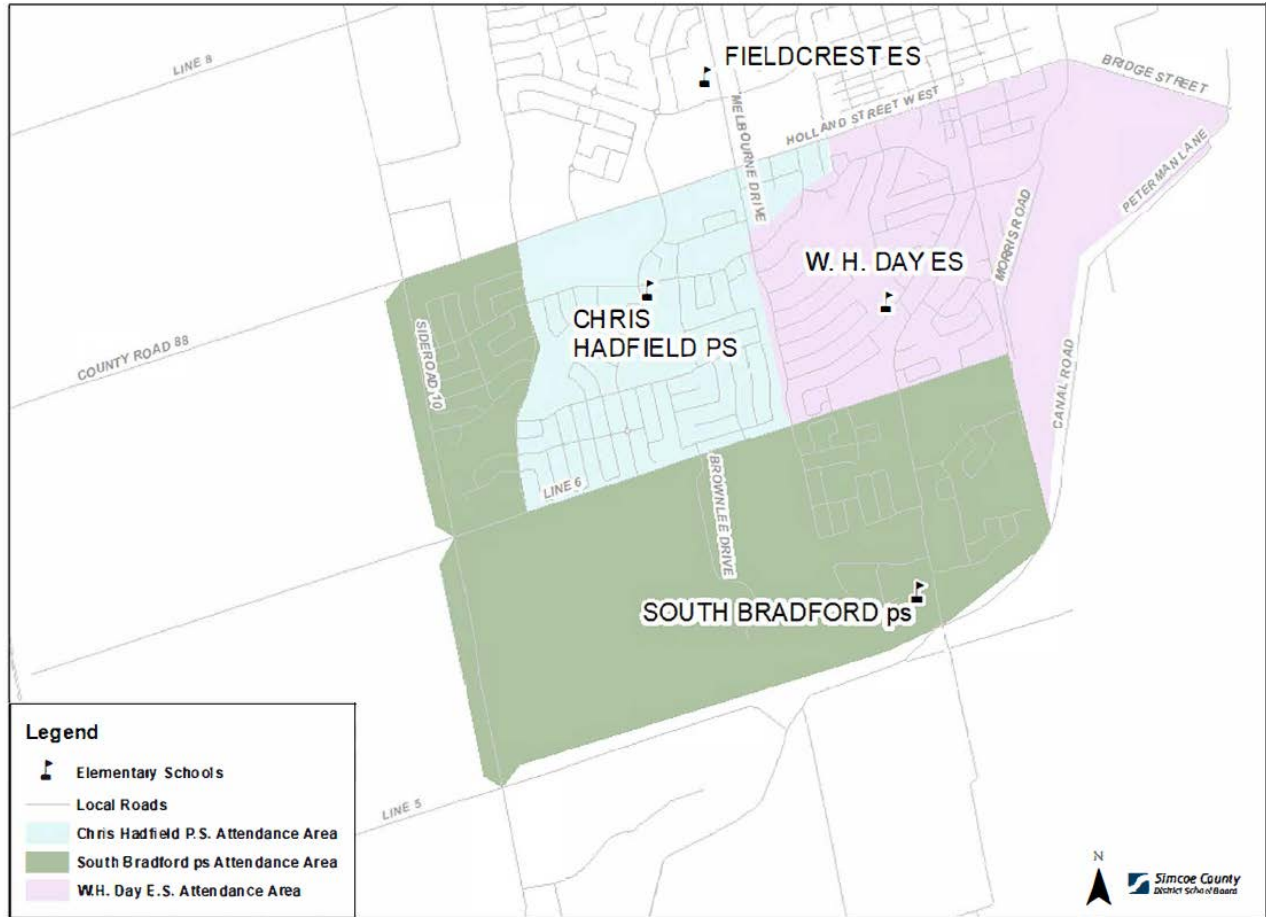
French Immersion Areas Under Consideration



Bradford Attendance Areas North of Holland Street



Bradford Attendance Areas South of Holland Street



French Immersion Attendance Areas

